



# **SURGICAL DISPOSABLE PRODUCTS CATALOGUE**

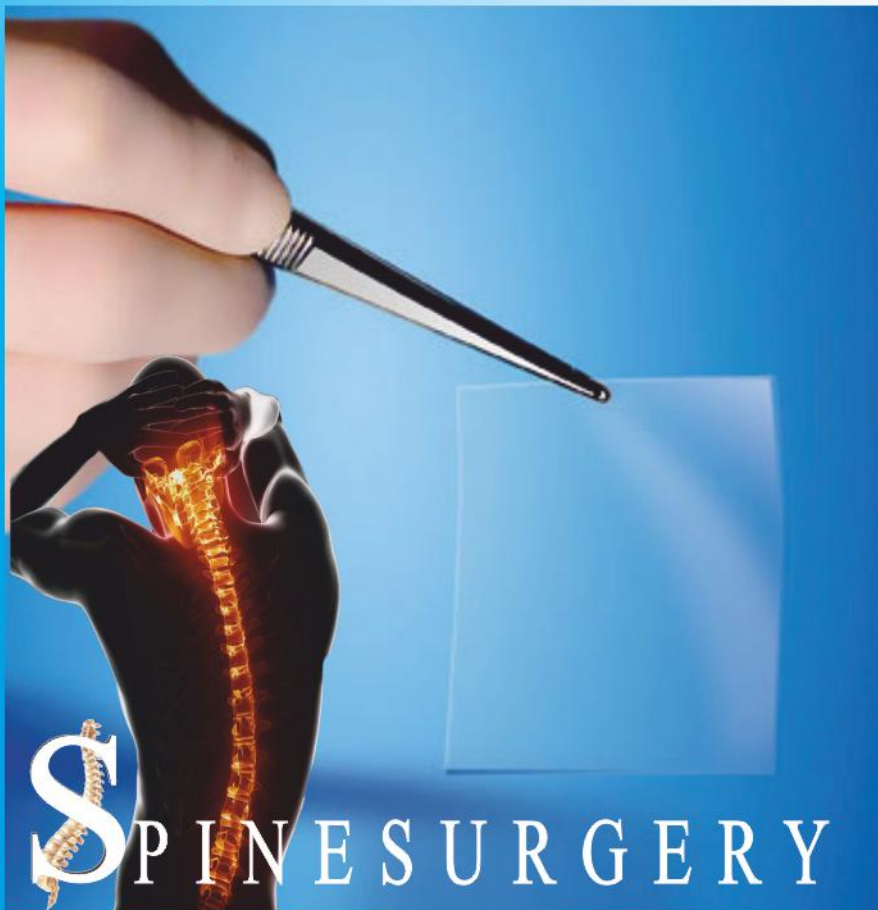




"SUPRO FILM for healing without adhesion



**SUPRO<sup>®</sup>FILM**  
degradable anti-adhesion film



**SPINESURGERY**

**Διασπάσιμη Αντι-συμφυτική μεμβράνη**

**Absorbierbarer Anti-Adhäsion film**

**Film Antiadherencias Reabsorbible**

**Film résorbable d'anti-adhérences**

**Film Per il Controllo Delle Aderenze**

**Emilebilir Adezyon Önleyici Film**





# SUPRO<sup>®</sup>FILM

Transparent,

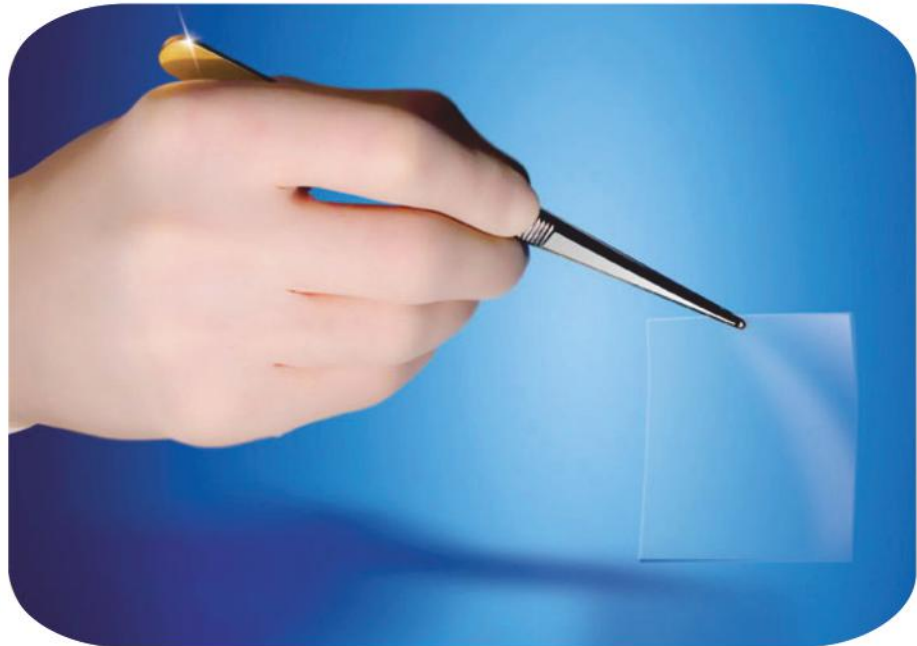
Flexible,

Cuttable,

Easy to use,

Sticks by itself,

No suture need,



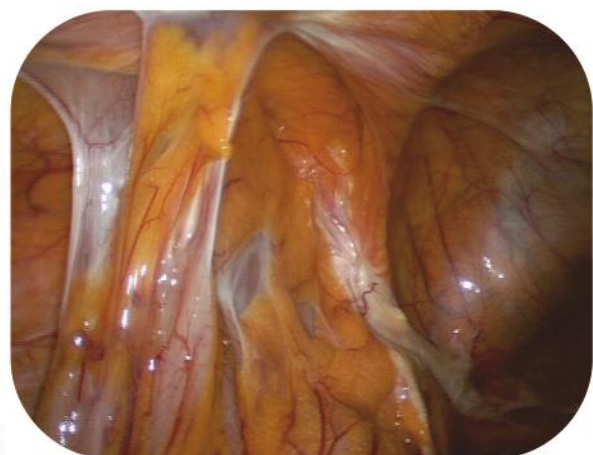
Suprofilm is membrane that use for preventing post-operative adhesions.

It prevents the adhesion with preventing contact of protein coagulum and intestines.

It activates the cell function, restrains the ageing

of cell, lengthens the life of cell and improves the immunity.

It increases the regeneration of traumatic tissue and provides scartrization





Clinic researches in America which is made with the patients having pelvic surgery show that economical costs and psychological effects of adhesions are affecting people as much as physical effects.

**What problems can adhesions cause?**

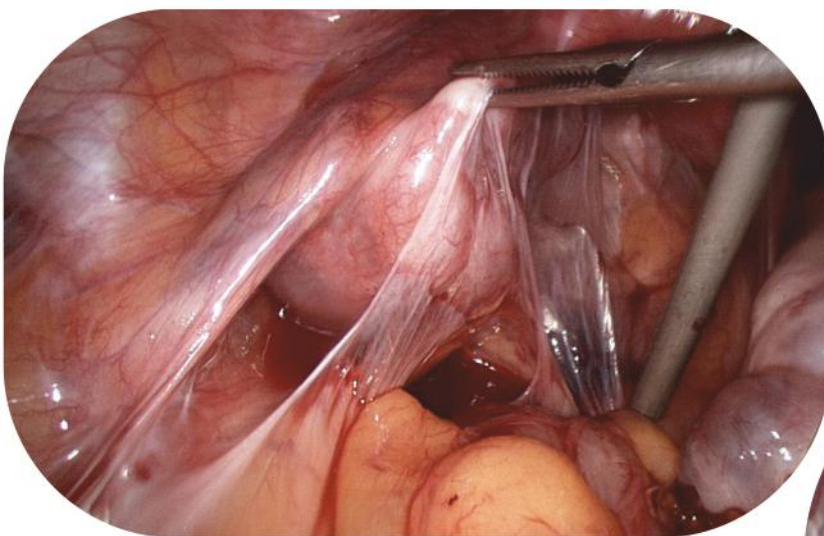
**Pelvic pain;** which may result when adhesions are present in the pelvis.

Adhesions are a common cause of pelvic pain - an estimated percent of women suffering from pelvic pain have adhesions.

**Infertility;** which may result when adhesions twist the tissues of the ovaries and tubes, locking the normal passage of the egg from the ovary to the uterus.

**Bowel obstruction;** the disruption of normal bowel flow, which can result when adhesions twist or pull the small bowel. In the uterus and in the pelvis, adhesions can cause infertility and other reproductive problems. The adhesions can block the ends of the fallopian tubes causing infertility

Researches prove that about infertility, adhesions are in the first place with rate %40, having secondary operations and pelvic pains are another causes.

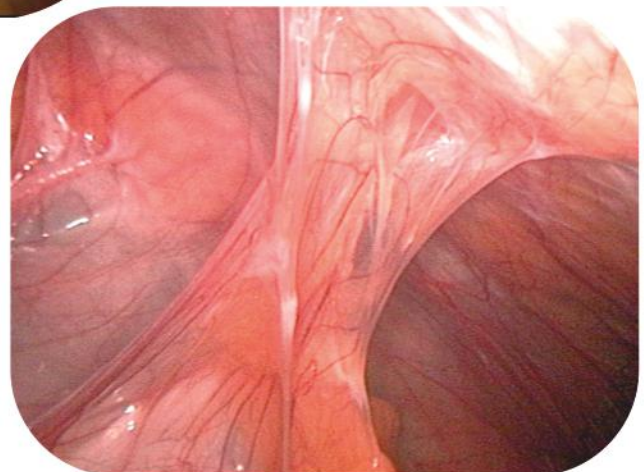
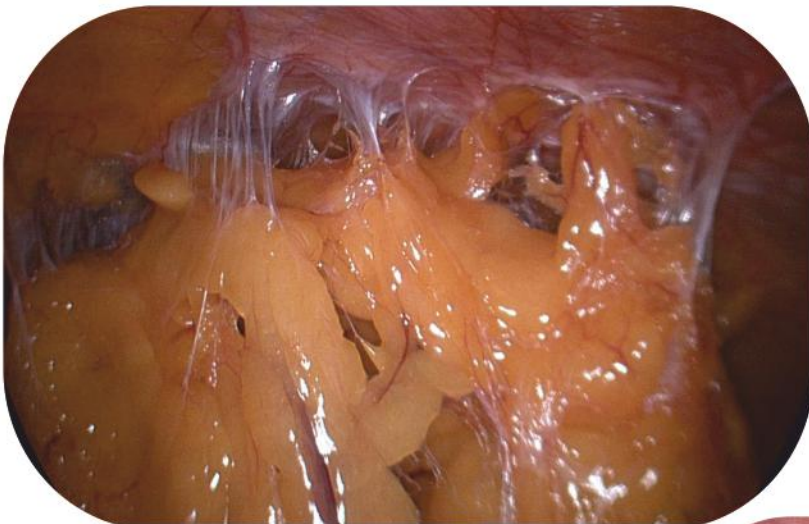




Abdominal adhesions are bands of fibrous scar tissue that form on organs in the abdomen, causing the organs to stick to one another or to the wall of the abdomen. It can also form in people who develop peritonitis, an infection that has spread to the membrane that covers the abdominal organs. Peritonitis commonly occurs after appendicitis or another abdominal infection

In most patients, adhesions cause health problems

The death rate is as high as 37% in people who develop bowel obstruction which is one of the result of abdominal adhesion.







Ready for inject and laparoscopic use.

Suprogel is an anti-adhesive gel that use for preventing adhesions after operations.

It can be used in open and laparoscopic surgery.

It is ready to use and can be observed in application area easily.

Application is easy and it reaches all the surfaces.

It does not need extra device to apply. It saves gel form on the tissue, it has its own sticky and holds to the tissue.

It provides a safety and flexible adhesion barrier.

Spinal adhesions have been implicated as a major contributing factor in failure of spine surgery. Fibrosis following surgery is an integral part of the body's natural healing response but also has unavoidable adverse consequences.





Supro Gel has characteristics that prevent fibrosis tissue and adhesion after

spine surgery, compatible with human body, absorbable,

biologic barrier and in gel form. Suprogel saves the dura

and nerve root cells. Healing will be without adhesion.

Patient feels less pain and no reduction for daily activities.

In addition to this, all the adhesions are removed and the

patient is saved against peridural adhesions.

If the surgeon does not use Suprogel, the result will be

peridural fibrosis and the operation will be unavoidable.

Neural structures curls, jump to adhesive wound tissue and

cause radicular pain. This pain limits daily activities of patient.



After a successful operation, the forming of fibrosis tissue which packs the spinal cord and nerve roots is an undesirable complication.

The only solution to prevent this is to provide an absolute hemostasis and then to use Suprogel for preventing forming fibrosis tissue.

With the healing of spinal cord without adhesion, we can finish the surgical procedure with the lowest cost, time and without risk of trauma in relapse cases.

Suprogel is biocompatible and it does not cause the reaction of foreign bodies.





# SUPRO<sup>®</sup> GEL

## ADHESIONS OF HAND SURGERY

Suprogel prevents the formation of fibrosis or adhesion after peripheral nerve surgery or tendon surgery

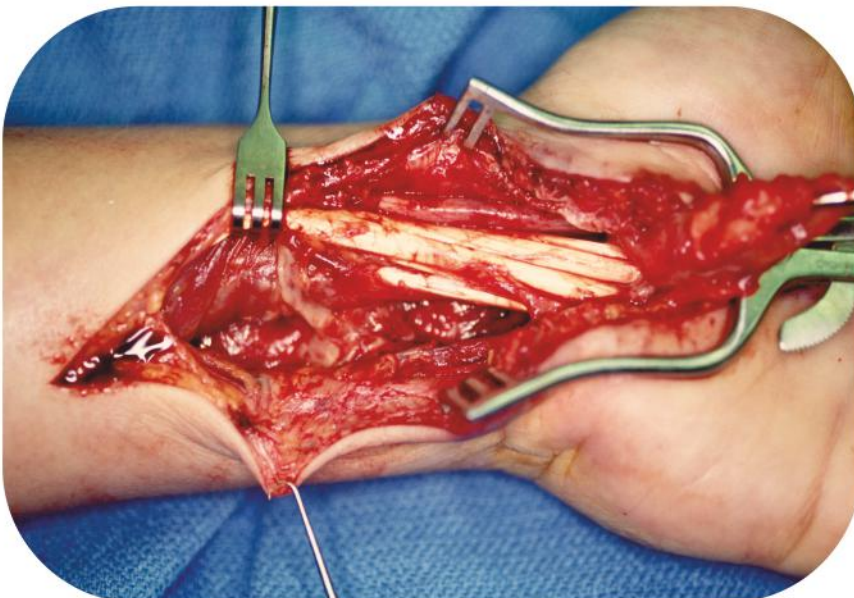
Adhesions increase after operations traumatic events or inflammatory process.

Abnormal formation of connective tissue fibrous bridges which join together adjacent tissue or organs

In the peripheral nerve and in tendon, extra-neural and peritendinous scarring may lead to tethering of nerves and tendon to adjacent tissues.

Adhesions rise following surgery, traumatic events or inflammatory process against internal organs.

Adhesion formation rise 7 days after operations, during the normal tissue wound healing and its effects go on along 12 days.



The results of hand surgery adhesion;

NERVE:

Pain

Compressive syndrome

Restrict motion

Dysaesthesia and paraesthesia

Permanent deformations

TENDON:

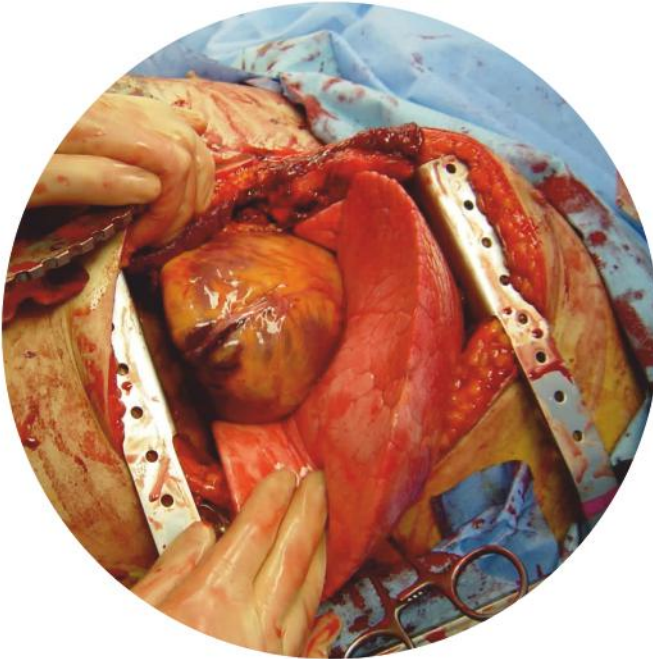
Pain

Restrict motion

Impairment of function

Permanent deformations





Transparent Flexible Cuttable  
No sticking to glove and itself

Hemostatic  
Both sides usable

No need dry area  
Absorbs by spreading

Biocompatible

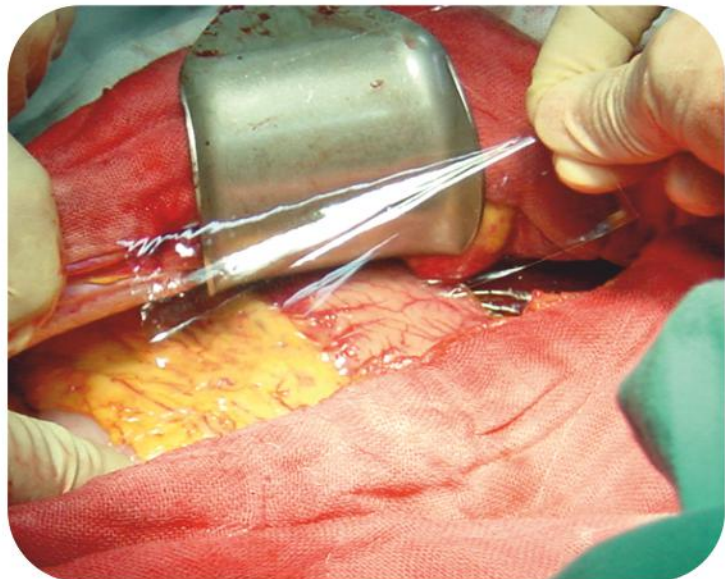
Supro Film NaNo is totally safe and  
biocompatible with the human body.

Easy to Use

It does not need any extra procedure  
for the application.

Resorbable

Supro Film NaNo is absorbable in 14 days. Cardiovascular surgeons realize that the post-op cardiac adhesion is unavoidable and it extends and complicates the secondary open heart surgery procedures. They also realize that the resulting patient risks and prolonged anesthesia exposure negatively impact the patient. The economical cost and physiological effects of adhesion:



Pain, Recurrence, Lower life quality for patient, Function defect of organism, The risk of hospital infection, Psychological risk of patient, Time cost, Financial cost (Finding test and Diagnosis subsequent operation, Hospitalization-drug, Current cure, Surgical cure),



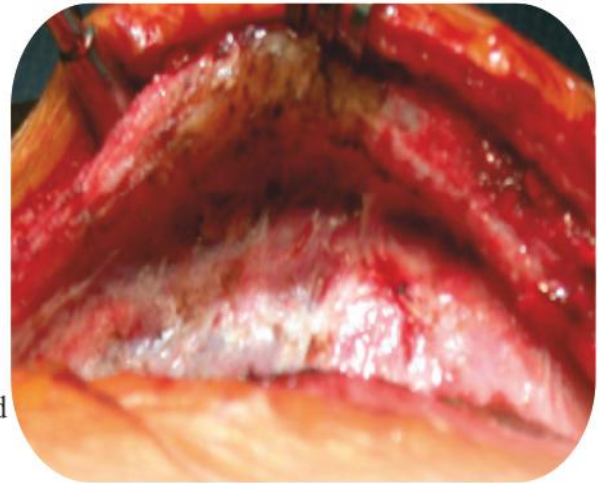
# SUPRO<sup>®</sup>FILM

adhesion barrier **N<sub>a</sub>N<sub>o</sub>**

## Application:

Cardiovascular Surgery; the operations, which at post-op period, adhesion or fibrous tissue formation are unwelcome, like cardiac valve replacement, coronary artery disease, congenital heart disease, aortic and ventricle disease.

Supro's structure provides effective functionality and integration. For the purpose of preclude adhesion formation,



SuproFilm Nano Adhesion Barrier, is placed between epicardial surface and opposing tissue surrounding heart at final stage of open heart surgery process.

Supro Film nano preclude adhesion between epicardial surface and chest wall tissue. Prevents the emergence of the epicardial fibrosis seen after cardiac operations. Along the prior stages of recovery, Suprofilm nano, adhesion barrier, preclude adhesion formation and supports healing.

At the pediatric patients who need to have re-operation with sternotomy Suprofilm nano must be used to preclude the post-operative adhesions.

At clinical research, adhesion formation hasn't been observed at 92% patients of Supro Group, at 8% patients has been seen Phase 1.

At Control Group just 18% patients hasn't been observed adhesion formation and 36% patients has moderate adhesion, it is recorded that 46% patients has severe adhesion formation.





# SUPRO<sup>®</sup> SUI



SUPROSUI Vaginal tape tension-free

100 % polypropylene monofilament

Non - absorbable polypropylene

Macropore knitting

Resistance to tensile strength

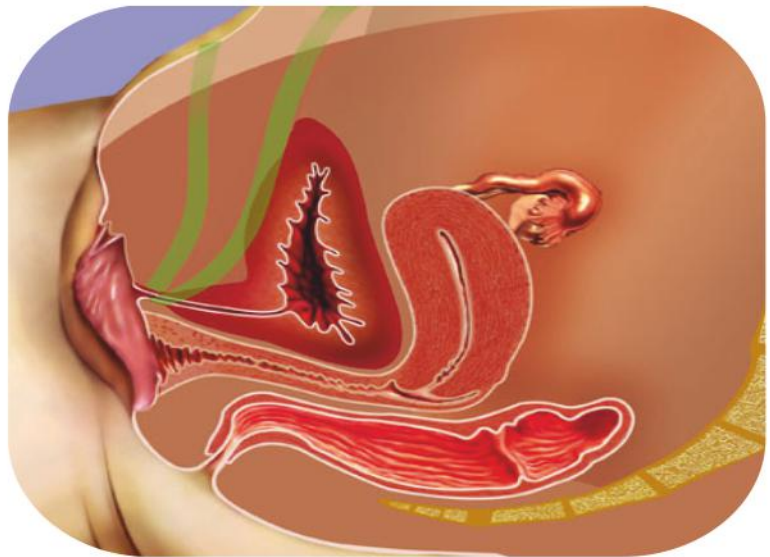
Atraumatic edges

A low elasticity coefficient

Easy to install

Long term efficiency

Immediate initial fixation



A low elasticity coefficient and special treatment that make this tape convenient for surgical treatment of female stress urinary incontinence.

Supro SUI presents the modern solutions for stress urinary incontinence that afflicts a high percentage of women.

There are application instruments for these surgical techniques





# SUPRO<sup>®</sup> SUI

Vaginal tape tension free  
Treatment of Stress Urinary Incontinence

SUI symptoms occur when either the pelvic floor muscles have been damaged or the urethral sphincter muscle becomes weakened. Medical research has discovered a number of factors about stress urinary incontinence: Genetics, Gender, Age, Race, Weakened muscles.

The most common causes of stress urinary incontinence symptoms are Pregnancy and childbirth.

Pelvic surgery and radiotherapy.

Other causes:

Obesity

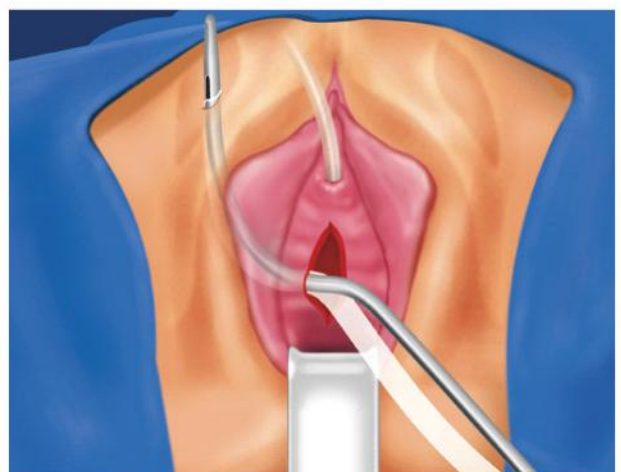
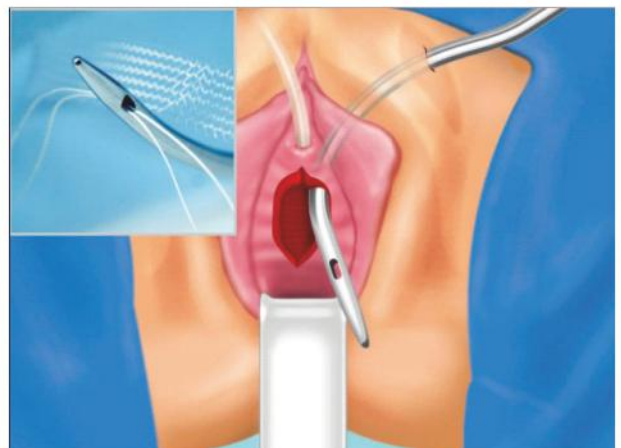
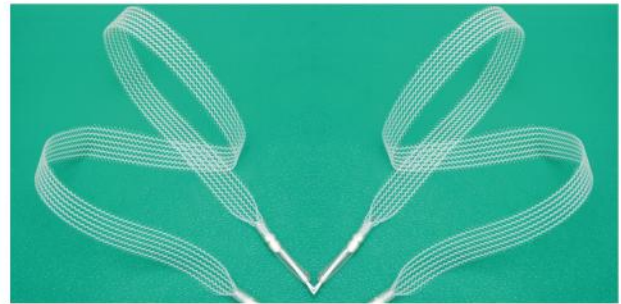
Constipation

Smoking and lung disease

The menopause

Supro SUI demands increase according to the age.

The SUI treatment procedure is appropriate for most all patients, including overweight patients, elderly patients and even those who have gone through previous operations for stress urinary incontinence.





# uro-gynaecological solutions



**SUPRO<sup>®</sup> SUI 4**  
Pelvic Floor Support System  
**CYSTOCELE**

**Excellent Solution For Stress Urinary Incontinence**

What is a cystocele?

A cystocele occurs when the wall between a woman's bladder and her vagina weakens and allows the bladder to droop into the vagina. This condition may cause discomfort and problems with emptying the bladder.

Symptoms of Cystocele:

Excessive straining such as during childbirth, chronic constipation or heavy lifting after menopause when estrogen decreases Loss of urinary control with coughing, laughing or sneezing feeling that you haven't completely emptied your bladder after urine infections

Pain or urinary leakage during sexual intercourse Feeling of fullness or pressure in your pelvis and vagina;

Acystocele is mild-grade 1 - when the bladder droops only a short way into the vagina.

With a more severe-grade 2 - cystocele, the bladder sinks far enough to reach the opening of the vagina.

The most advanced-grade 3 - cystocele occurs when the bladder bulges out through the opening of the vagina.

Large cystoceles may require surgery to move and keep the bladder in a more normal position.

The most common procedure for cystocele repair is for the surgeon to create more support for the bladder with SuproSui Cystocele 4 corners.

















SuproSui Cystocele kit give patient permanent solution.

Surgical Approach:

TOT fixation tension-free vaginal approach



# uro-gynaecological solutions

Products	References	Instruments	Prosthesis	Indications
<b>Vaginal Tape</b> <b>``Tension-Free``</b>  8 697831 062806	VT08600 VT08500 VT10500 VT10400			Stress urinary Incontinence via : • transobturator approach • suprapubic approach
<b>TOT KIT</b> <b>Vaginal Tape</b> + <b>transobturator application device</b>  8 697831 062813	TO-01 + VT08500 VT10500 VT10400			Stress urinary Incontinence via : • transobturator approach
<b>SUPRAPUBIC KIT</b> <b>Vaginal Tape</b> + <b>Suprapubic application device</b>  8 697831 062820	SP-01 + VT08600 VT08500 VT10500			Stress urinary Incontinence via : • suprapubic approach
<b>HELICAL KIT</b> <b>Vaginal Tape</b> + <b>Helical application device</b> Left & Right  8 697831 062912	HA-01L HA-01R + VT8500 VT10500 VT10400			Stress urinary Incontinence via : • Helical application device Left & Right
<b>CYSTOCELE KIT</b> <b>Cystocele bant</b> + <b>TOT application device</b>  8 697831 062882	TO-01 + CB 60x206mm			Cystocele via : • transobturator approach
<b>Intraducer trocar</b> <b>instrument</b>  8 697831 062837	IT-01 + VT08600			Stress urinary Incontinence via : • Vaginal Tape Tension Free With trocar both side

**SUPRO® SUI**  
Vaginal tape tension free  
Treatment of Stress Urinary Incontinence

**SUPRO® SUI**  
*Macropore*

**SUPRO® SUI**  
*Light*

**SUPRO® SUI**  
Pelvic Floor Support System *RECTOCELE*

**SUPRO® SUI**  
Pelvic Floor Support System *CYSTOCELE*

**SUPRO® SUI**  
Pelvic Floor Support System *CYSTOCELE*

We manufacture the products under the conditions of GMP and Clean Room `` Class C `` environment.

Every Klas Medikal product is specifically designed and developed through constant feedback from surgeons and an ongoing commitment to R&D.

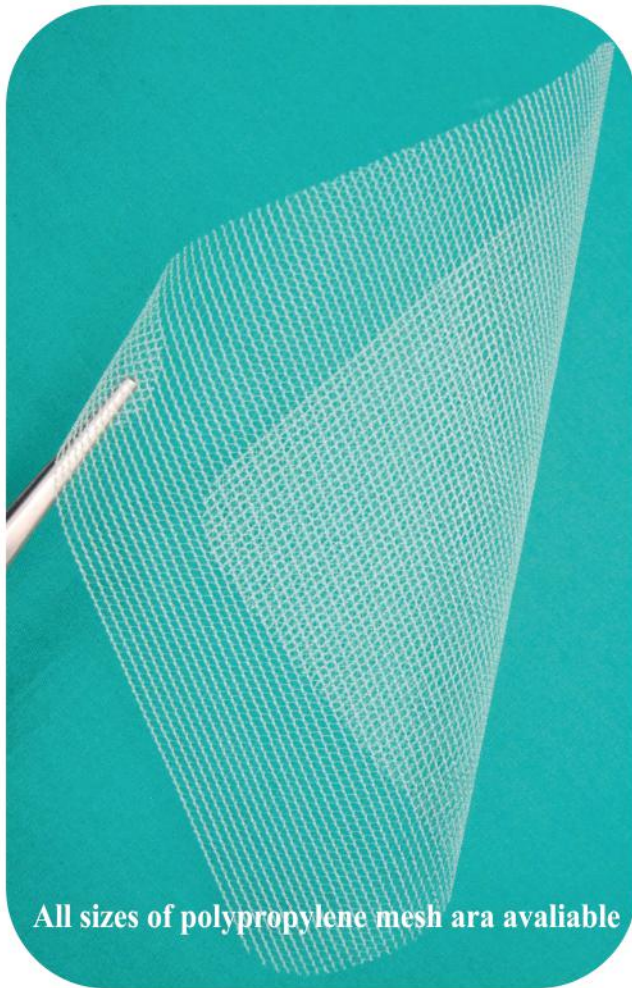
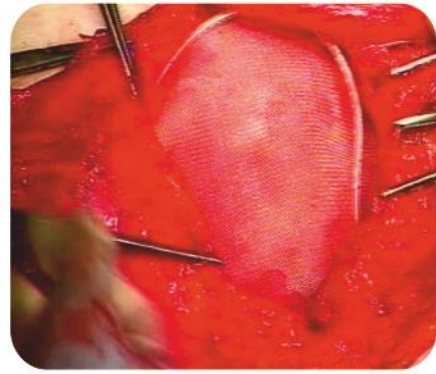
Klas Medical supplies the highest quality products by paying special attention to each and every stage of production with the EN ISO 9001 and the EN ISO 13485 standards.





# SUPRO<sup>®</sup> MESH

POLYPROPYLENE MESH FOR HERNIA REPAIR



All sizes of polypropylene mesh are available

Mesh is permeable; this gives it a high capacity for establishment and integration.

Mesh is transparent and flexible, making it easy to use in celioscopy or laparotomy and enabling it to fit perfectly against the cavity wall.

Mesh has excellent multidirectional mechanical properties and exceptional resistance to tearing.

Fibrosis measurements with electron microscopic observed after a month

## ADVANTAGES

Thinner than all available meshes.

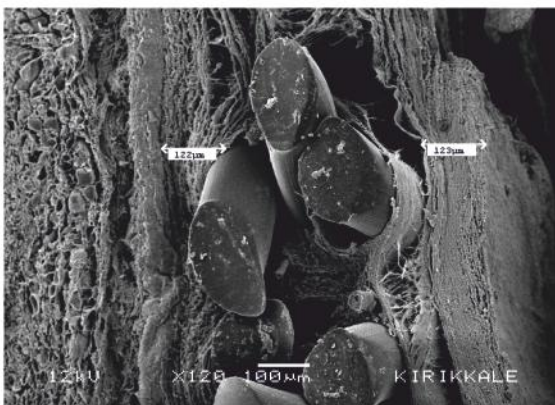
Providing extra ease and comfort for the patient.

Ideal flexibility providing easier placement.

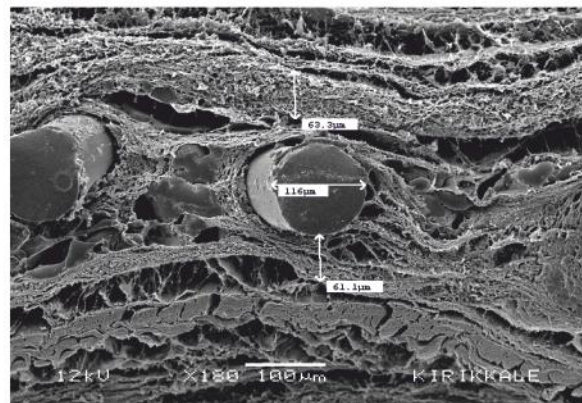
Ideal tensile strength. Excellent resistance and elasticity.

Ideal porosity. Optimum rigidity and minimal infection risk.

No shrinkage. High capacity for colonization and integration. Effects wound healing positively.



Thick mesh,  
Fibrosis measurement with electron microscopic  
after a month



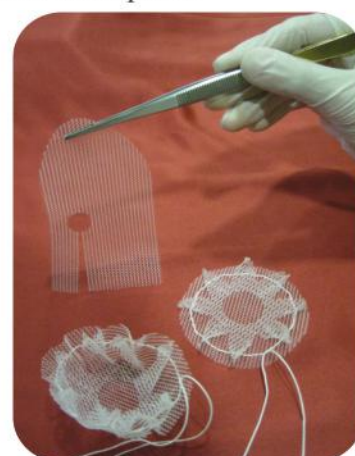
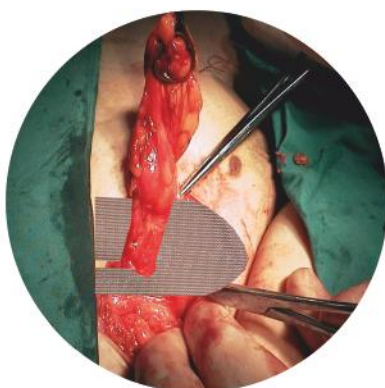
Supromesh, Fibrosis  
measurement with electron  
microscopic after a month





#### Highlights of the Treatment

- \* Technically simple
- \* Minimally invasive "
- \* Quick recovery
- \* Low complication rate
- \* Minimal cost
- \* Low Recurrence Rate
- \* A pre-shaped mesh plug that looks like a small badminton shuttle-cock is inserted into the hernia defect in open surgery. In addition, the other piece of flat mesh is placed on top of the hernia defect.
- \* Supromesh plug is a non-absorbable, lightweight, preformed, three-dimensional plug constructed of knitted of monofilament polypropylene thread.
- \* The innovative shape simply conforms to the defect, stays in place, sutures easily, and will not collapse or "pop out" during the procedure.
- \* The soft, flexible mesh minimizes irritation and integrates seamlessly into the healing tissue.







### Highlights of the Treatment

Technically simple Minimally invasive

Quick recovery

Low complication rate Minimal cost

Low Recurrence Rate

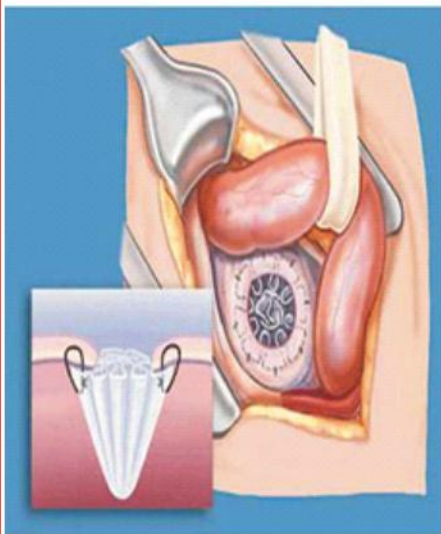


A pre-shaped mesh plug that looks like a small badminton shuttle-cock is inserted into the hernia defect in open surgery. In addition, the other piece of flat mesh is placed on top of the hernia defect.



# SUPRO<sup>®</sup> MESH *plug 3D*

**This product is indicated for the repair of inguinal hernia defects.**



The inguinal region (area between the abdomen and the thigh) is part of the main abdominal wall. The abdominal wall is made up of several layers of tough connective tissue (similar to that of tendons and ligaments), muscle, fat and skin. Usually, a hernia starts out as a small tear in this connective tissue and expands. It is called "inguinal" because the intestines push through a weak spot in the inguinal canal, located in the connective tissue between layers of abdominal muscle. You can be born with a weakness in this connective tissue or it can be caused through repetitive lifting or straining. This stretching and tearing of tissue can be very painful. If a person's intestines become twisted or pinched in this hole, that portion of the intestine can strangulate and die. If not repaired quickly, your life can be at risk.

Supromesh Plug3d is a non-absorbable, lightweight, pre-formed, three-dimensional plug constructed of knitted of monofilament polypropylene thread.

The innovative shape simply conforms to the defect, stays in place, sutures easily, and will not collapse or "pop put" during the procedure.

The soft, flexible mesh minimizes irritation and integrates seamlessly into the healing tissue.







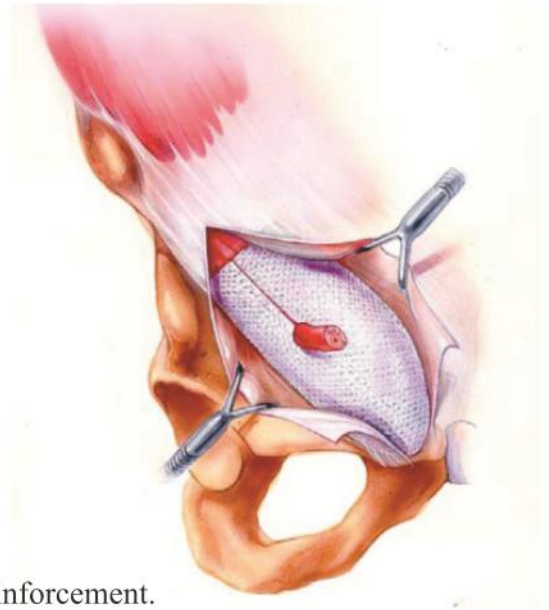
# SUPRO<sup>®</sup> MESH *Plug 3D*

Mesh plug designed for use in a tension-free preperitoneal open inguinal hernia repair technique.

Supro Mesh Plug3d is ideal for use in a tension-free preperitoneal repair technique.

It has kept pace with new surgical techniques.

For example, in the innovative Modified Technique, the outer cone of the Supro Mesh Plug3d, used as an underlay patch, is placed in the preperitoneal plane so that it lies flat against the posterior aspect of the transversalis fascia, assisted by intra-abdominal pressure.

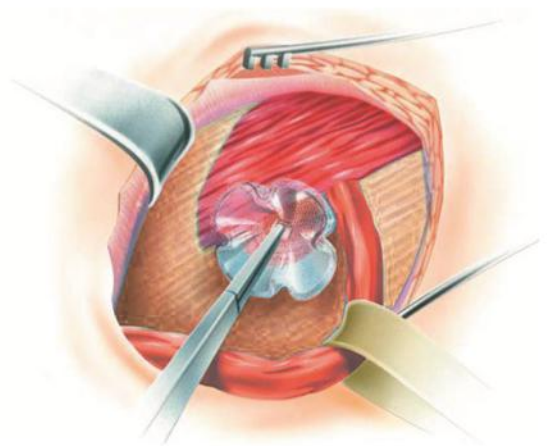


In all inguinal hernias, the flat, pre-cut onlay is used for reinforcement.

It is placed without sutures on the anterior surfaces of the posterior wall of the inguinal canal.

The tails of the onlay patch will help reinforce the internal ring.

If desired, the tails can be brought together with sutures.



Non-absorbable, monofilament sutures are recommended. Fibroblastic proliferation and collagen formation will penetrate the mesh and secure it in place.

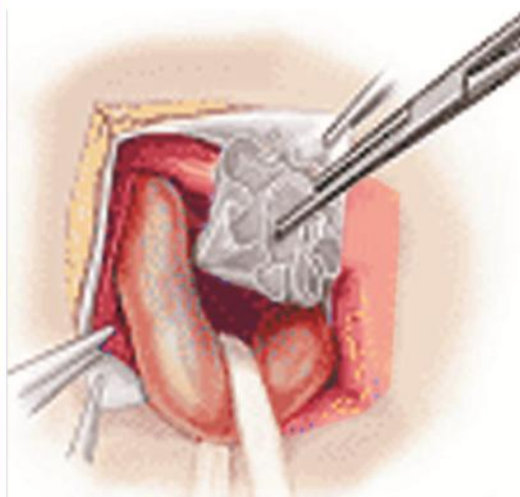


# **SUPRO<sup>®</sup> MESH** *Plug 3D*

Supro Mesh Plug3d is designed with pleated edges that conform readily to defects of various sizes and shapes. The inner petals allow the plug to maintain its fluted form and can be removed to customize Supro Mesh Plug3d to each individual patient. The monofilament polypropylene design ensures healthy tissue ingrowth.

Because surgery with the Supro Mesh Plug3d requires less operating and recovery time compared to conventional hernia repair methods, procedures can be exceptionally cost-effective.

Supro Mesh Plug3d is designed with pleated edges that conform readily to defects. The variety of sizes accommodates all inguinal hernias.



- The operation can take less than 30 minutes, because of being pre-formed new generation 3d.
- It is ideal for minimal invasive surgery
- Incision is approximately 4-5cm
- Local or epidural anesthesia can be used
- Adapts all inguinal hernias
- Recur rates reported at less than 1%
- Chronic pain rate is less than 1%



CODE	DESCRIPTION		PACKAGE
P3DS	3D Plug Mesh		1 per/box
P3DM	3D Plug Mesh		1 per/box
P3DL	3D Plug Mesh		1 per/box





# SUPRO<sup>®</sup> MESH

PARTIALLY ABSORBABLE COMPOSITE MESH

*Composite*

keeps you up...

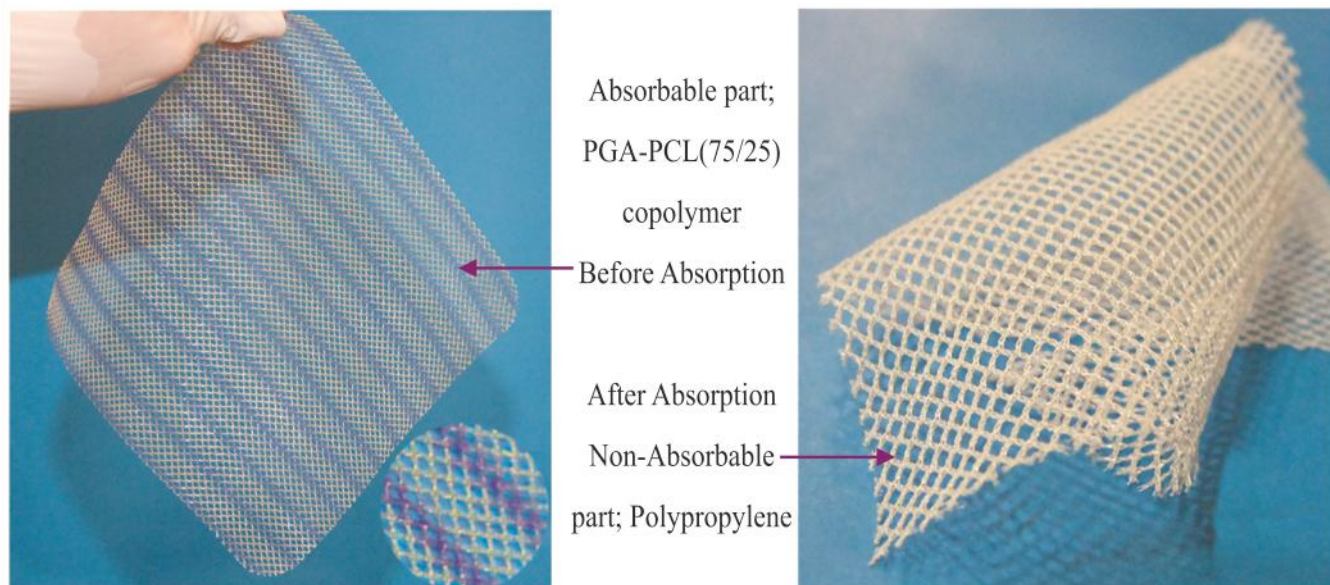
PARTIALLY ABSORBABLE COMPOSITE MESH





# SUPRO<sup>®</sup>MESH *Composite*

PARTIALLY ABSORBABLE COMPOSITE MESH



SuproMesh Composite is a partially absorbable knitted mesh.

Specific design knitted structure is composed by 50% polypropylene (non-absorbable part) and 50q/o Polyglactine (absorbable part) which provides its strength and softness.

The absorbable part of mesh begins to be homogeneously absorbed in 60-70 days.

SuproMesh Composite is compatible for physical integrity and provides maximum comfort.

SuproMesh Composite is flexible and has transparent part, making it easy to use in celioscopy or laparotomy and enabling it to fit perfectly against the cavity wall.

It can be cut to any sizes and shapes without leaving mesh particles.

SuproMesh Composite does not damage tissues, owing to its soft edges.

SuproMesh Composite provides better visibility, due to coloured lines.

It decreases foreign material reaction by 60% after partial absorption.





# SUPRO<sup>®</sup> MESH *Composite*

PARTIALLY ABSORBABLE COMPOSITE MESH

SuproMesh Composite is a unique and superior macroporous partially absorbable mesh.

It offers excellent strength with minimal foreign body mass.

Allow patients to heal more naturally.

Designed for laparotomic and laparoscopic operations.

Allows surgeons the versatility to perform various hernia repairs with a single technology.

Providing extra ease and comfort for the patient.

Ideal flexibility providing easier placement.

Ideal tensile strength.

Excellent resistance and elasticity.

Ideal porosity.

Optimum rigidity and elasticity.

Causes fibrosis in fast and minimal rate.

Minimum infection risk.

No shrinkage.

High capacity for colonization and integration.

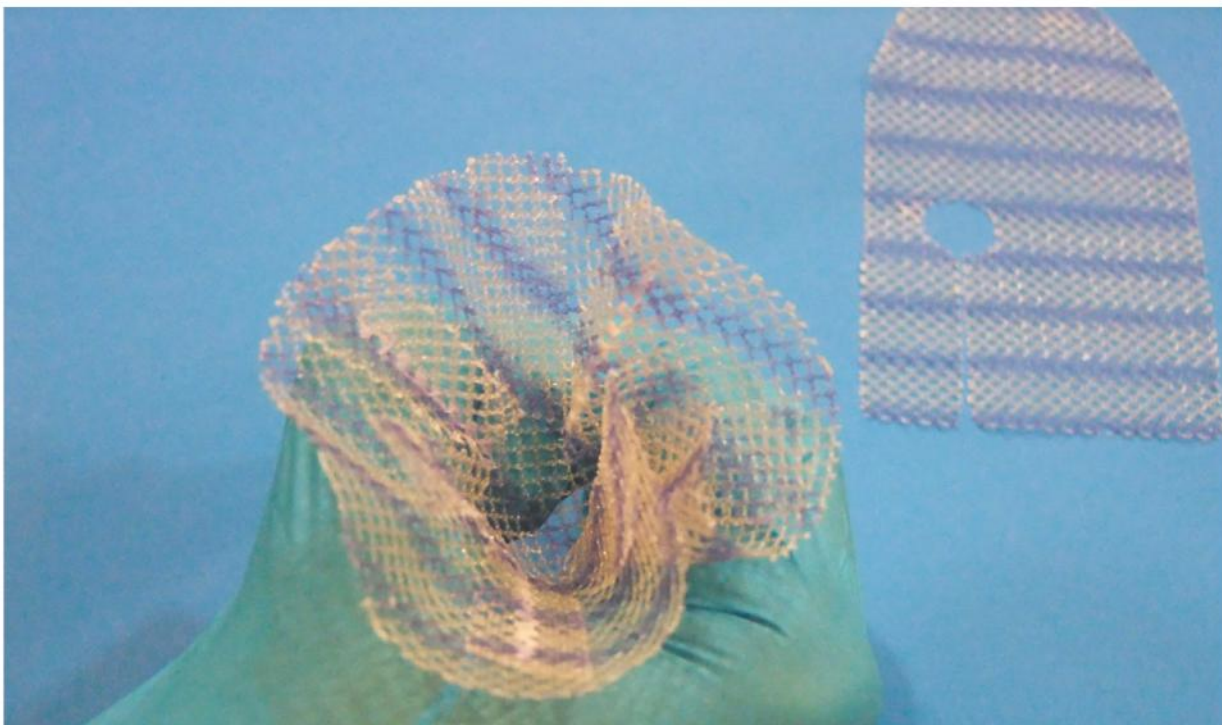
Effects wound healing positively.

1) Less stiff: After partial absorption, lower risk of pain with more soft and pliable mesh.

2) Minimized foreign body: Lower risk of long-term side effects due to less residual foreign body remained after partial absorption.

3) Sufficient strength: Before absorption-rigid enough for easy manipulation.

After partial absorption-retains sufficient strength for enduring normal abdominal pressure.

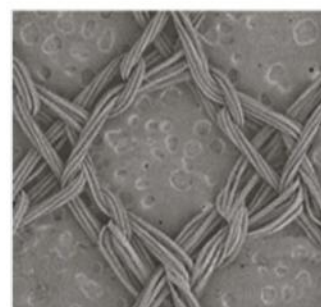
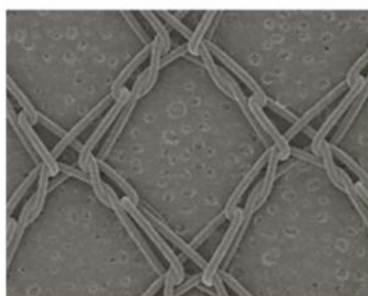




# SUPRO<sup>®</sup> MESH

PARTIALLY ABSORBABLE COMPOSITE MESH

## Composite



SuproMesh Composite provides;

with its absorbable part:

- Reduce residual amount of pp ( < 30g/m<sup>2</sup> )
- with its composed of segmented pie monofilament:
- Proper initial stiffness, strong burst strength
- Lower inflammation than multifilament products
- Excellent flexibility (Soft mesh) than other products after absorption "

with its knitting structure:

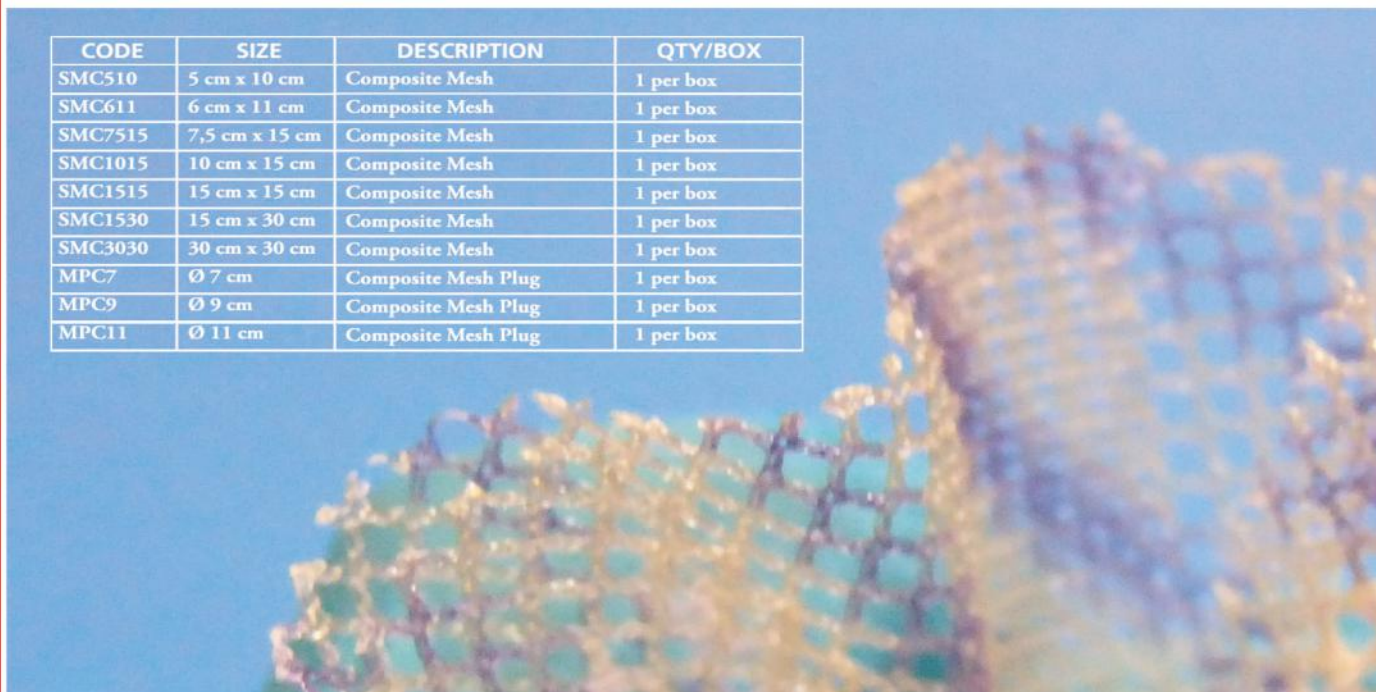
· Violet stripe

Large pores

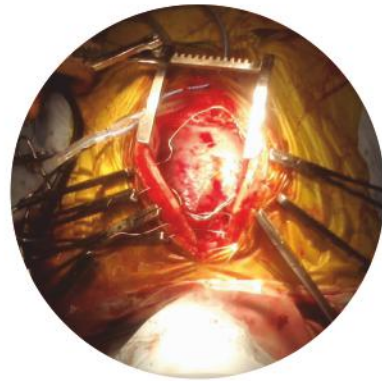
Low weight



CODE	SIZE	DESCRIPTION	QTY/BOX
SMC510	5 cm x 10 cm	Composite Mesh	1 per box
SMC611	6 cm x 11 cm	Composite Mesh	1 per box
SMC7515	7,5 cm x 15 cm	Composite Mesh	1 per box
SMC1015	10 cm x 15 cm	Composite Mesh	1 per box
SMC1515	15 cm x 15 cm	Composite Mesh	1 per box
SMC1530	15 cm x 30 cm	Composite Mesh	1 per box
SMC3030	30 cm x 30 cm	Composite Mesh	1 per box
MPC7	Ø 7 cm	Composite Mesh Plug	1 per box
MPC9	Ø 9 cm	Composite Mesh Plug	1 per box
MPC11	Ø 11 cm	Composite Mesh Plug	1 per box







Transparent  
Let skin to breath  
Impermeable to bacteria  
and water Hypoallergenic  
Proper viscosity High elasticity

Cardiovascular procedures,  
valve replacements, in Orthopedic  
surgery knee and hip replacements,  
in neurosurgery shunt implantations  
are more prone to post-op infections  
due to skin bacteria.

Post operative infection is a major problem for surgeons in all fields surgery

There are some major skin pathogens responsible for post-operative infections on the following: Staphylococcus aureus

Staphylococcus epidermidis

Escherichia coli

Enterococcus faecalis

HI-TEC drape contains developed iodophor. Iodophor provides high and fast disinfection with application.

In cases of implants it assumes greater significance.

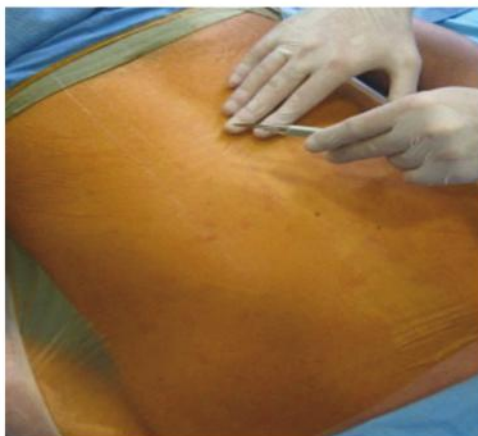
Implants act as hideouts for these bacteria and increases the risk

HI-TEC Antimicrobial Surgical Drape contains iodophor has been developed and provides a permanent, high effective, fast disinfection with iodophor application. Iodophor is a combination of iodine and it is an effective agent bacteria.

The contact of liquid during application comes out free iodines and accelerates the period of permanent disinfection.

Iodophor does not cause irritation on the skin, has no toxic matter. It is spotless and stable. Iodophor is effective also in acidic area.

Antimicrobial drapes assume greater significance in cases of implants. Implants act as hideouts for these bacteria and increases the risk



HI-TEC Antimicrobial Drape provides a chemical and physical barrier against bacteria contamination.

HI-TEC is an incise drape film and has double adhesive power.



## HI - TEC DRAPE FILM

Transparent and let skin to breath Impermeable to bacteria and water Hypoallergenic and Proper Viscidity, High elasticity

Bone, abdomen operation, Chest and Heart surgical operation, Plastic operation, Ophthalmology and Pediatrics operations

It is a high quality transparent ultrathin film with high elasticity

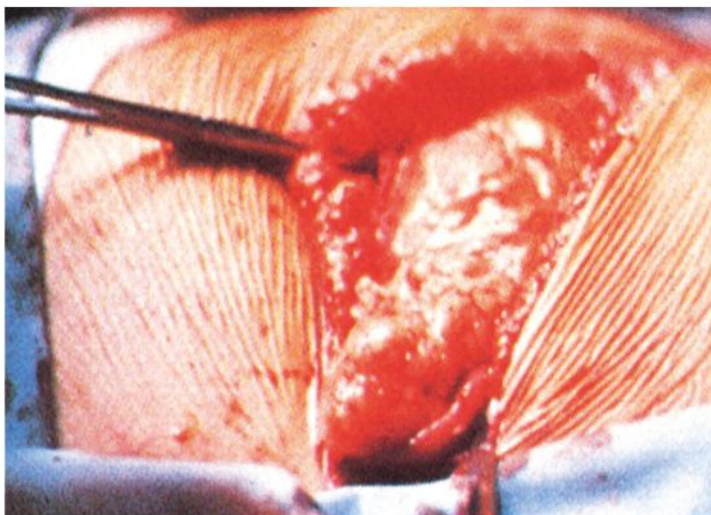
It permits skin to breathe and prevent gathering of excessive moisture under the film and decrease infection possibility and provide an acceptable environment around cuttings

Blood and similar liquids are suitable environments for bacteria.

HI - TEC Surgical drape covers the operation site with its adhesive area and does not permit to effect operation wound by bacteria, forms a barrier against bacteria and does not permit the transfer of bacteria

Medical Grade Acrylic Viscous is not influenced by liquid and keeps its feature for long time after incision.

This adhesive specification provides a barrier against bacteria and does not allow the bacteria transfer.







## HI - TEC NEUROSURGICAL SPONGES

Specialized, Surgical Sponges for Neuro, Orthopedic, Spinal, Vascular and Microscopic surgeries. Made of high absorbent material, easily replace and remove.

Its elasticity provides ease of use.

Sponges and strips are X-Ray detectable.

Smooth - surface conforms to tissue contours when moist.

HI - TEC Neurosurgical Sponge has absorbent property for its both surface.

HI - TEC Neurosurgical Sponges are made of

Non - woven Cotton providing a soft, strong, thin and high absorbent character in use.

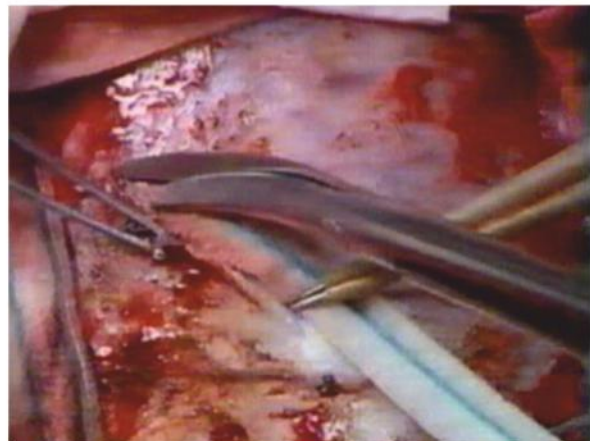
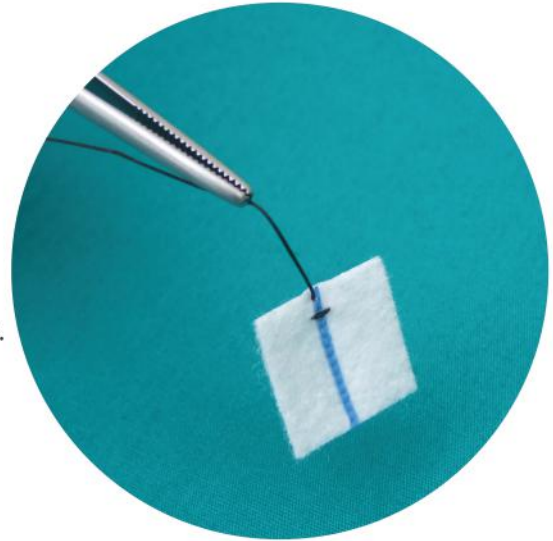
HI - TEC Neurosurgical Sponges is made from a pliable natural hemostatic material with hypoallergenic and biocompatible properties.

Due to the high quality of material HI-TEC Neurosurgical Sponges provides effective bleeding control (Hemostasis).

HI - TEC Neurosurgical Sponges provide absorption and keep the liquid.

Soft texture reduces possibility of tissue trauma. Disposable Material

Non - absorbable, 10 pads / strips in 1 sterile package, 20 sterile packages in 1 Box



HI TEC®  
Hydrocolloid Wound Care Dressing

HI TEC®  
Foam Wound Care Dressing

HI TEC®  
Non-woven Wound Dressing

HI TEC®  
Alginate Wound Care Dressing

HI TEC®  
Wound Dressing IV

HI TEC®

HI TEC®  
PESurgical Tape

HI TEC®  
Transparent Wound Dressing

HI TEC®  
Non-woven Surgical Tape

HI TEC®  
Transparent Wound Dressing

WOUND DRESSING SOLUTIONS

HI TEC®  
Non-woven Wound Dressing

HI TEC®  
Transparent Wound Dressing

HI TEC®  
Wound Closure Strip

KLAS  
MEDİKAL

OUR PRODUCTS ARE MANUFACTURED IN OUR FACTORY WHICH  
HAS ISO 9001-ISO 13485 AND GMP "CLASS C" STANDARTS

Ramazanoglu Mahallesi  
Mahsus Sokak No:1 34906  
Pendik / İstanbul / TÜRKİYE  
Phone : +90 216 576 48 88  
Fax : +90 216 577 82 97  
info@klasmedical.com  
www.klasmedical.com