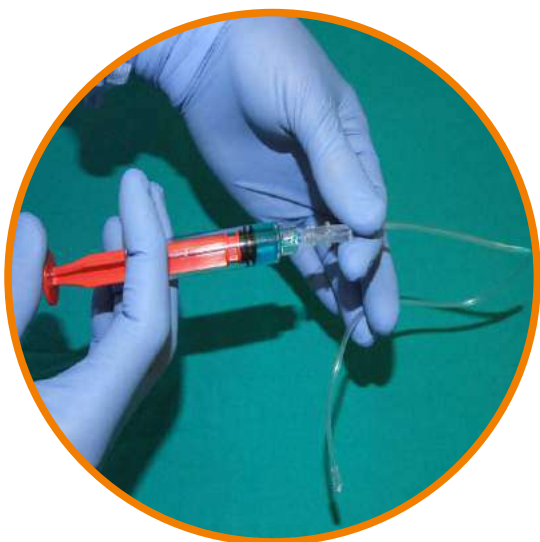




keepsyouup...





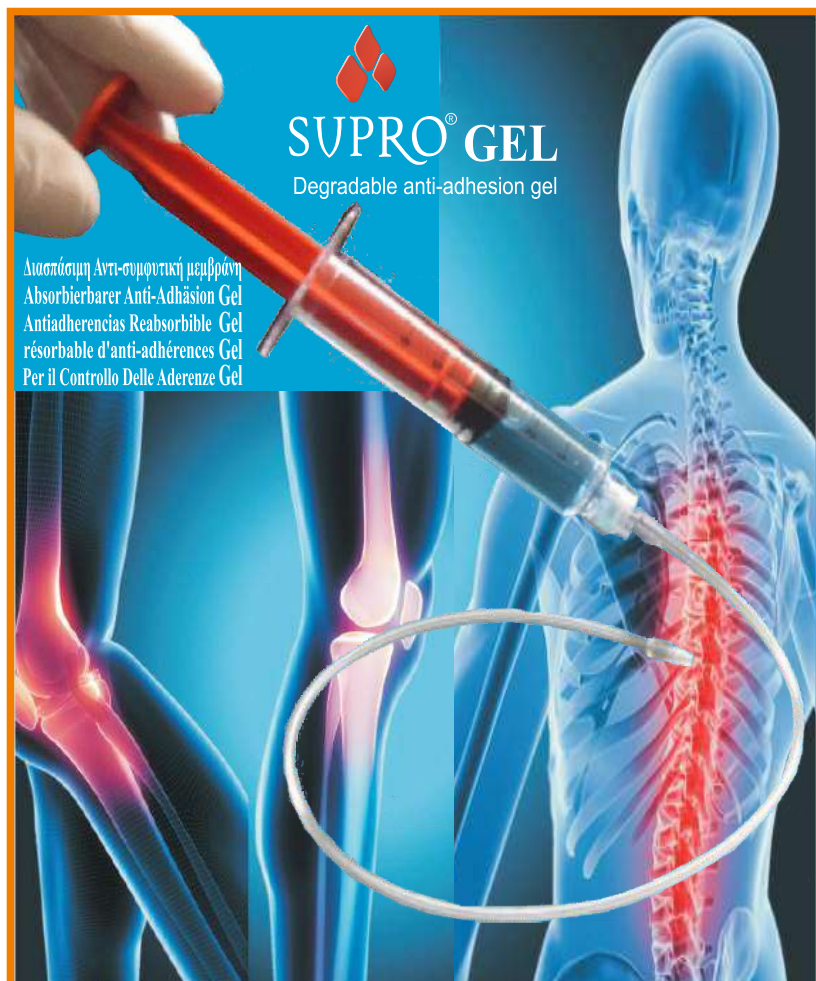
- **Injectable**
- **Easy to use**
- **Ready to laparoscopic use**
- **No need to any contributive equipment**
- **No need to dry area**
- **It is ready to use and can be observed in application area easily.**

***Suprogel is an anti-adhesive gel that use for preventing adhesion after operations.**

***Application is easy and it reaches all the surfaces.**

***It keeps gel form, stay on the tissue and sticks by itself.**

***Suprogel is biocompatible and no foreign substances reaction.**



It can be used in all surgeries that post-op adhesion prevention is required such as
**General Surgery , Liver Surgery ,
Gall Bladder Surgery , Tumor Surgery ,
Orthopedics(knee/hip), Plastic Surgery,
Gynecology, Spinal Surgery,
Carpal Tunnel Syndrome, Tendon Surgery.**

CODE	SIZE
ABL1	1 ml
ABL2	2 ml
ABL3	3 ml
ABL5	5 ml
CUSTOMIZED SIZES ARE AVAILABLE	

SuproGel has characteristic that prevent fibrosis tissue and adhesion after spine surgery, compatible with human body, biological barrier in gel form.

SuproGel saves the dura and nerve root cells and healing will be without adhesion.

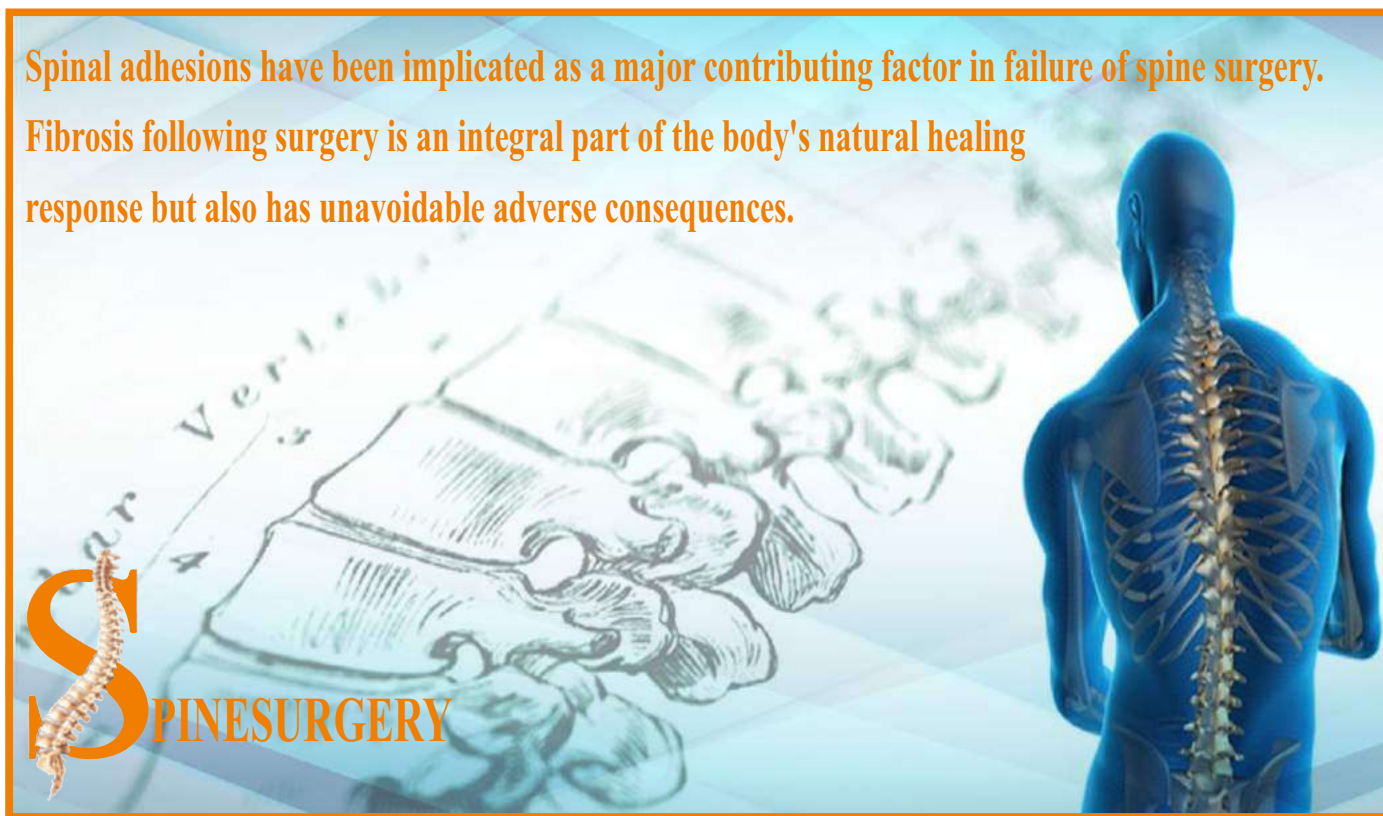
Patient feels less pain and no reduction for daily activities.

In addition to this, all the adhesions are removed and the patient is saved against peridural adhesions.

Adhesion sticks to neurons and wounded tissue and causes radicular pain.

This pain limits the patient daily activities. But the adhesion barrier does not allow to this.

Spinal adhesions have been implicated as a major contributing factor in failure of spine surgery. Fibrosis following surgery is an integral part of the body's natural healing response but also has unavoidable adverse consequences.



If the surgeon does not use SuproGel, the result will be peridural fibrosis and the secondary operation will be unavoidable.

Even after a successful operation, the forming of fibrosis tissue which covers the spinal cord and nerve roots are undesirable complication.

The only solution is SuproGel for preventing formation of the fibrosis tissue.

With the healing of spinal cord without adhesion can finish the surgical procedure with lowest cost, time and without risk of trauma in secondary case



SUPRO[®]GEL



Suprogel prevents the formation of fibrosis or adhesion after peripheral nerve surgery or tendon surgery.

Fibrotic connective tissue structure causes the adhesion of adjacent tissue with organs.

Post-op adhesions are cause of traumatic results and inflammation of internal organs.

Adhesions increasingly occur after the operation in 7 days and continues during the healing of tissue for 12 days.

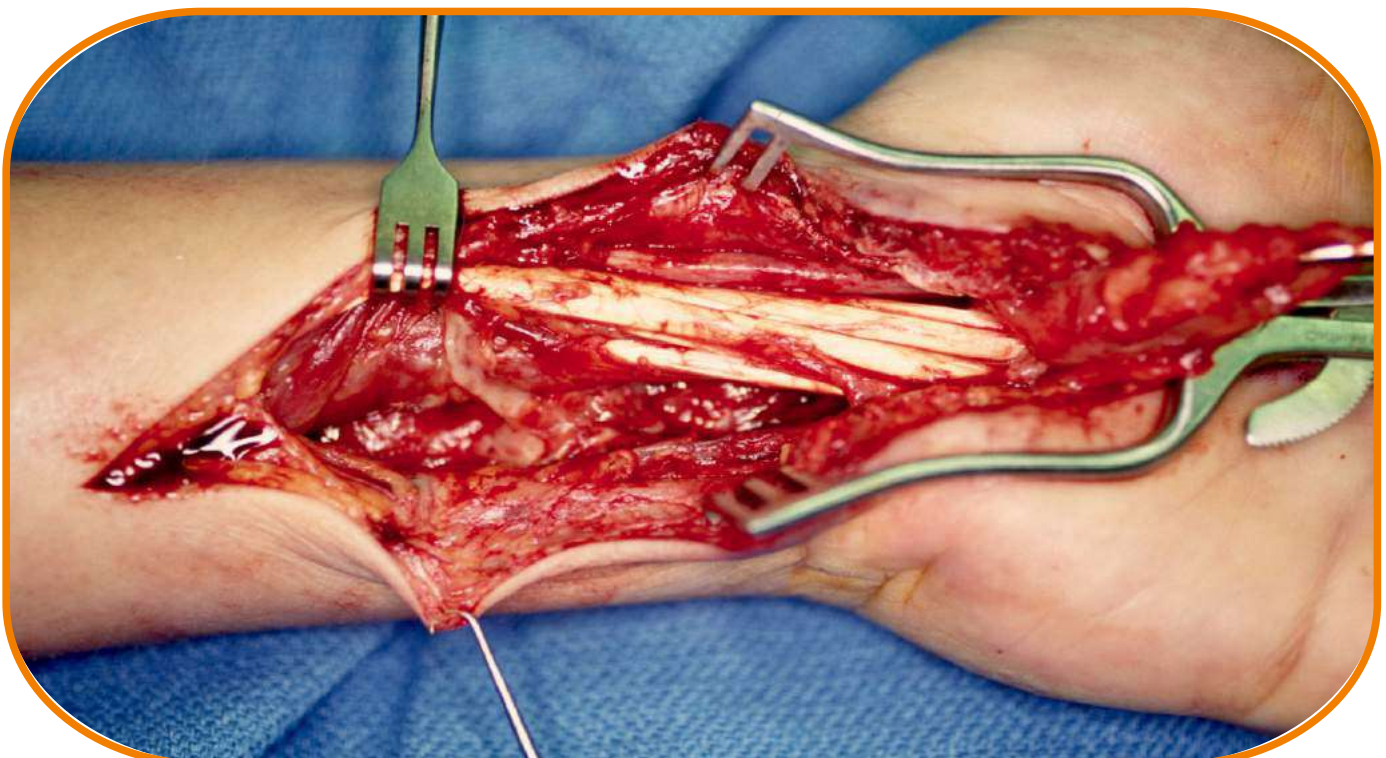
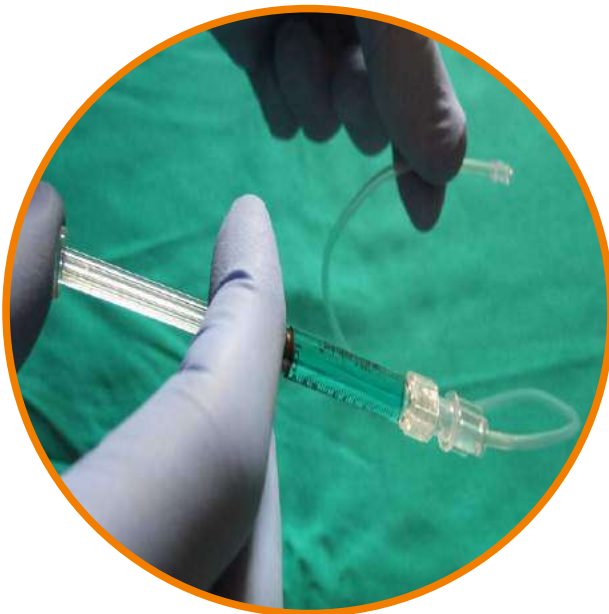
The results of hand adhesions are:

NERVE:

- Pain**
- Compressive syndrome**
- Restricted motion**
- Dysaesthesia and paraesthesia**
- Permanent deformations.**

TENDON:

- Pain**
- Restricted motion**
- Impairment of function**
- Permanent deformations.**





A low elasticity coefficient and special treatment that makes this tape convenient for surgical treatment of female stress urinary incontinence.

SuproSUI presents the modern solutions for stress urinary incontinence that effects a high percentage of women.

There are application instruments for the surgical techniques.



- SuproSUI Vaginal Tape Tension-Free
- %100 polypropylene monofilament
- Atraumatic and tension-free features
- Non-absorbable polypropylene
- Macropore knitting
- Excellent tensile strength
- Atraumatic edges
- A low elasticity coefficient
- Easy to install
- Long term efficiency
- Excellent retention



VAGINAL TAPE FOR INCONTINENCE

SUI symptoms occur when either the pelvic floor muscles have been damaged or the urethral sphincter muscle becomes weakened.

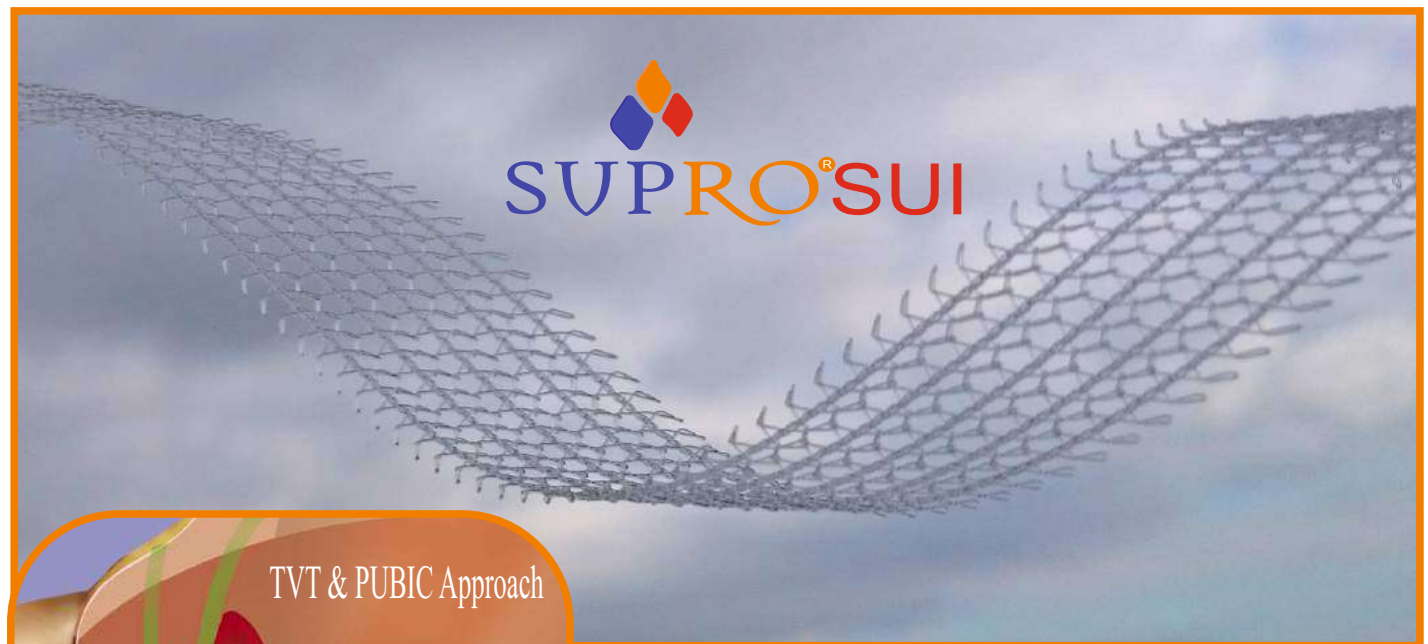
Medical research has discovered many factors about stress urinary incontinence;
Genetics, gender, age, race, weakened muscles

The most common causes of stress urinary incontinence symptoms;

Pregnancy and childbirth

Pelvic surgery and radiotherapy

Obesity, Constipation, Smoking and lung disease



The need of SuproSUI increases by age.

The SUI treatment procedure is appropriate
for most all patients including elderly patients
and even those who have gone through previous
operations for stress urinary incontinence.

Incontinence tapes are supplied with devices. Doctor can prefer vaginal tape models
for pubic or obturator canal applications.

There are available device for the TOT applications from outside to inside and inside to outside technique.



TOT



TOT Outside & Inside Approach



TOT Inside & Outside Approach

CYSTOCELE 4 ARMS



What is a cystocele?

A cystocele occurs when the wall weakens in between bladder and the vagina and causes the bladder to droop into the vagina.

Symptoms of cystocele:

Excessive straining such as during childbirth, chronic constipation, heavy lifting, after menopause when estrogen decreases, loss of urinary control with coughing, laughing or sneezing feeling that you haven't completely emptied your bladder after urine infections.

**uro-gynaecological
solutions**



Excellent Solution For Stress Urinary Incontinence

Large cystoceles may require surgery to move and keep the bladder in a more normal position.

The most common procedure for cystocele repairs for the surgeon to create more support for the bladder with SuproSUI Cystocele 4 corners.

SuproSUI Cystocele kit gives to patient permanent solution.



VAGINAL TAPE MINI SLING



Minimal Invasive Approach

Tension-Free

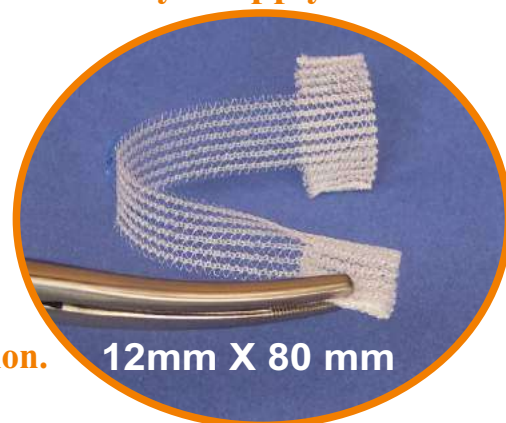
%100 polypropylene monofilament

Non-absorbable polypropylene

Excellent tensile strength

A low elasticity coefficient

Easy to apply



SuproSui Mini Sling vaginal tape is developed for invasive surgical application.
















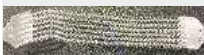
It can be easily applied by one incision.

The one incision application minimizes the possible injury and tissue trauma.

The special monofilament polypropylene structure prevents the stretching.

Makes the healing time shorter by supporting tissue integration.

It can be applied easily under local anesthesia

Products	References	Instruments	Tape	Indications
Vaginal Tape "Tension-Free"  8 697831 062943	VT1045 VT1050 VT1060			Stress urinary incontinence treatment via: * transobturator approach * suprapubic approach
TOT KIT Vaginal Tape + TOT device  8 697831 062813	KIT TO-01			Stress urinary incontinence treatment via: * transobturator approach
PUBIC KIT Vaginal Tape + TVT device  8 697831 062820	KIT SP-01			Stress urinary incontinence treatment via: * suprapubic approach
HELICAL KIT Vaginal Tape + Helical devices Left & Right  8 697831 062912	KIT HA-02			Stress urinary incontinence treatment via: * Helical application device Left & Right
CYSTOCELE KIT Cystocele tape + TOT application device  8 697831 062882	KIT CYS			Cystocele treatment via: * transobturator approach
MINI SLING  8 697831 062974	VT1280			Stress urinary incontinence via: Vaginal approach

SUPRO SUI
Vaginal tape tension free
Treatment of Stress Urinary Incontinence

SUPRO SUI
Vaginal Tape tension free
Atraumatic

SUPRO SUI
Vaginal Tape tension free
Light

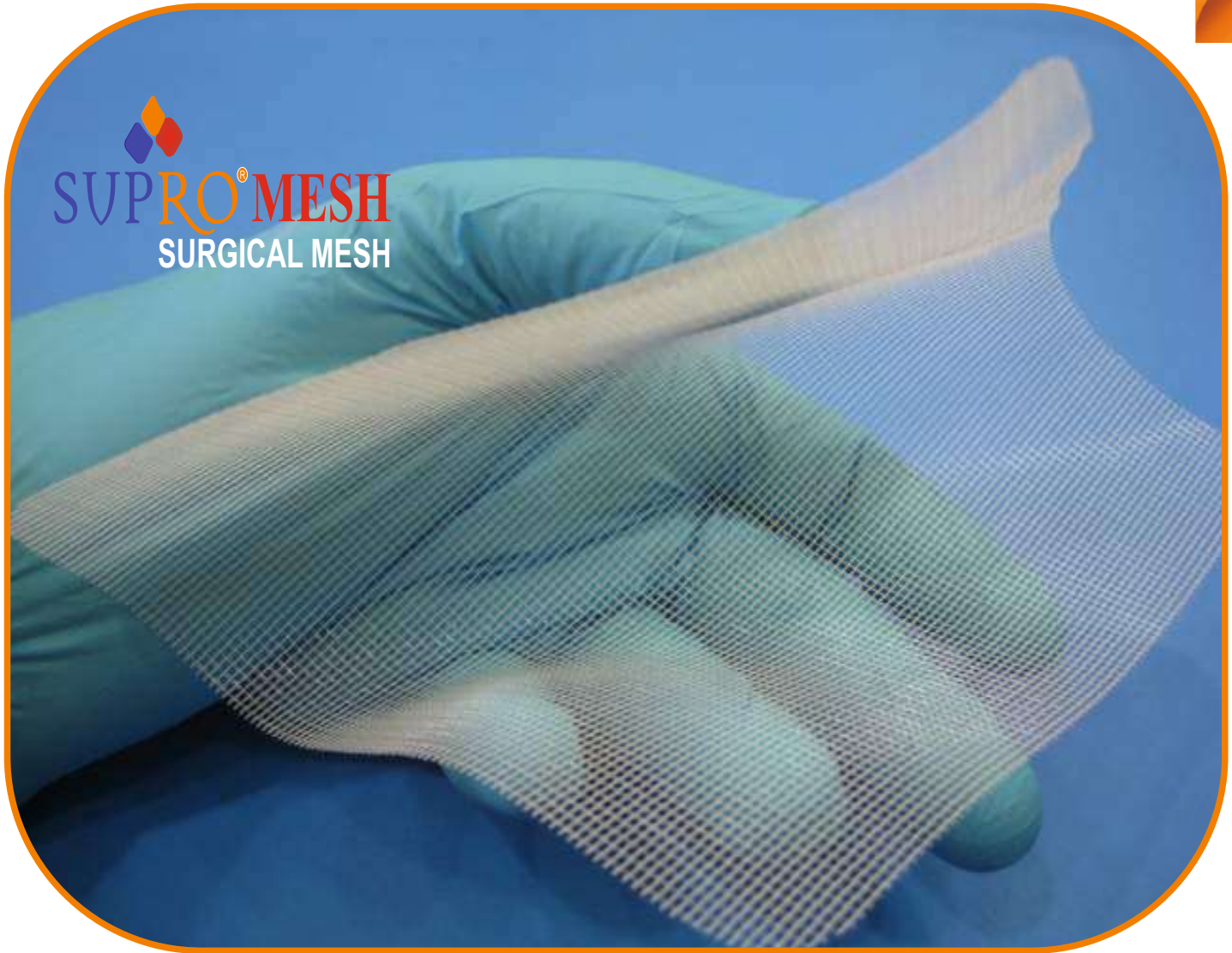
SUPRO SUI
Pelvic Floor Support System
RECTOCELE

SUPRO SUI
Pelvic Floor Support System
CYSTOCELE

SUPRO SUI
MiniSling



SUPRO[®]MESH
SURGICAL MESH



ADVANTAGES;

Thinner than all available meshes.

Providing extra ease and comfort for the patient.

Ideal flexibility providing easier placement.

Ideal tensile strength, excellent resistance and elasticity.

Ideal porosity, optimum rigidity and minimal cost.

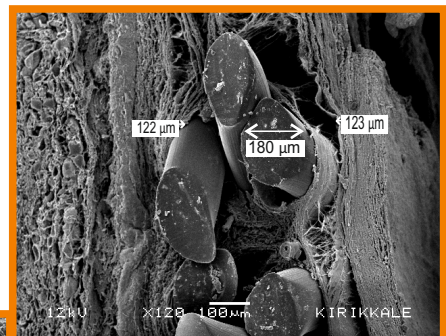
Minimum infection risk.

No shrinkage

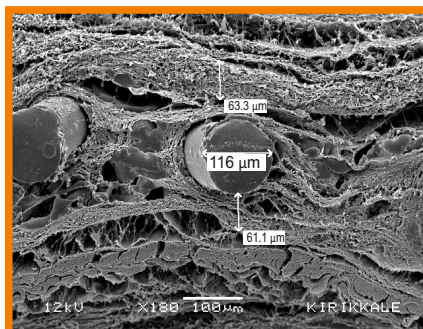
High capacity for colonization and integration.

Helps for healing of scars.

600 microns thick mesh - 1 month later



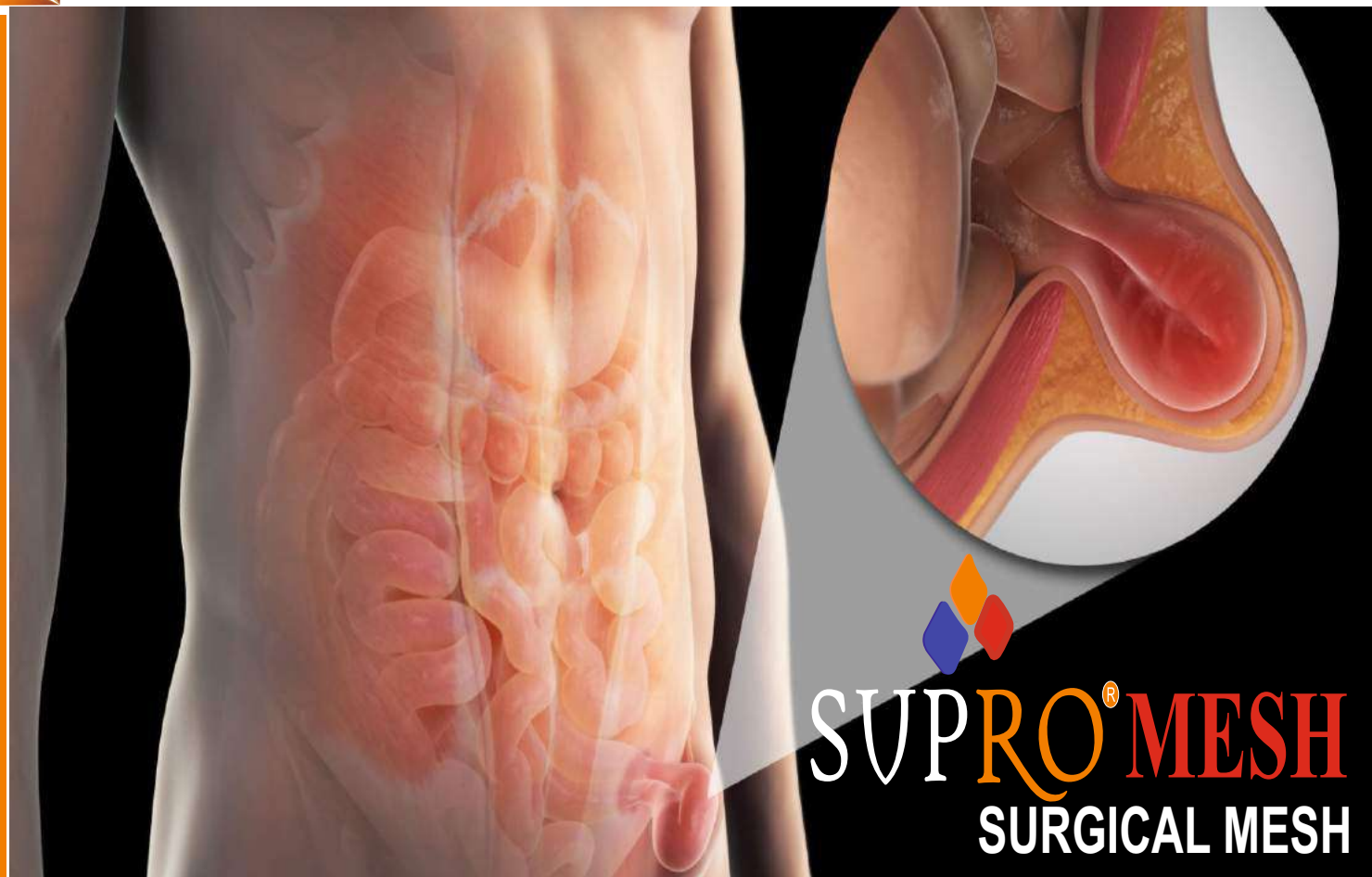
300 microns thick mesh - 1 month later



Fibrosis measurement
by electron microscope



POLYPROPYLENE MESH FOR HERNIA REPAIR



Mesh is permeable; this gives it a high capacity for establishment and integration.

Mesh is transparent and flexible, making it easy to use in celioscopy or laparotomy and enabling it to fit perfectly against the cavity wall.

Mesh has excellent multidirectional mechanical properties and exceptional resistance to tearing.



CODE

SIZE

SMS0611

06X11 cm

SMS7515

7,5X15 cm

SMS1015

10X15 cm

SMS1515

15X15 cm

SMS3030

30X30 cm

CUSTOMIZED SIZES ARE AVAILABLE

INDICATIONS

Mesh is designed to use for treatment of inguinal, femoral, umbilical, scrotal and incisional hernias and to provide reinforcement to the repaired hernia.

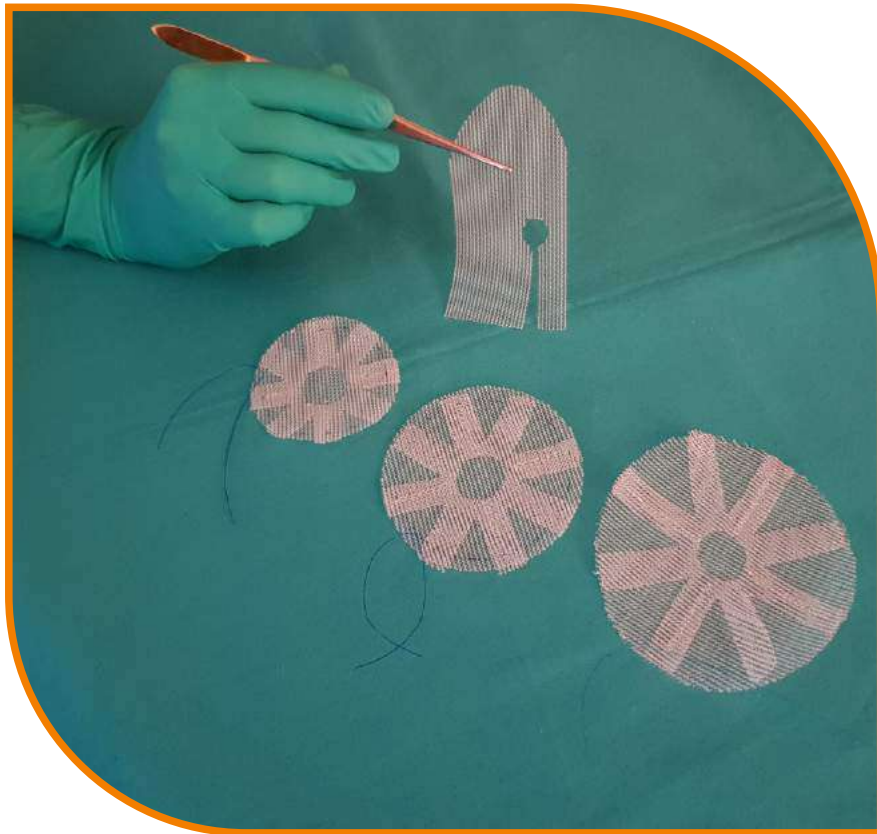
It can be used by open surgery or laparotomic techniques.

SUPROMESH PLUG FOR HERNIA REPAIR



Highlights of the Treatment

- * Technically simple
- * Minimally invasive
- * Quick recovery
- * Low complication rate
- * Minimal cost
- * Low Recurrence Rate



* A pre-shaped mesh plug inserted into the hernia defect in open surgery. In addition, the other piece of flat mesh is placed on top of the hernia defect.

* Supromesh plug is a non-absorbable, lightweight, formable plug constructed of knitting of monofilament polypropylene thread.

* The innovative shape simply conforms to the defect, stays in place, sutures easily and will not collapse or "pop out" during the procedure.

* The soft, flexible mesh minimizes irritation and integrates seamlessly into the healing tissue.



CODE	SIZE
PLG7	Ø7 cm
PLG9	Ø9 cm
PLG11	Ø11 cm



SUPROMESH PLUG 3D

SUPRO[®]MESH *Plug 3D*



Highlights of the treatment;

Tecnically simple

Minimally invasive

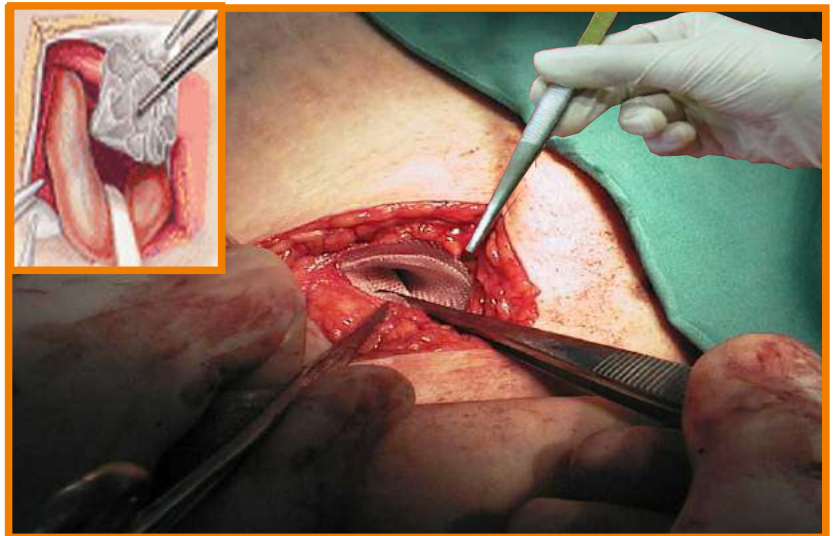
Quick recovery

Low complication rate

Low Recurrence rate

Low cost

A pre-shaped mesh plug is inserted into the hernia defect in open surgery. In addition, the other piece of flat mesh is placed on top of the hernia defect.



Supromesh Plug 3D is a non-absorbable, lightweight, preformed, three-dimensional plug constructed of knitting of monofilament polypropylene.

The innovative shape simply conforms to the defect, stays in place, sutures easily and will not collapse or "pop out" during the procedure. The soft, flexible mesh minimizes irritation and integrates seamlessly into the healing tissue.





The inguinal region is part of the main abdominal wall.

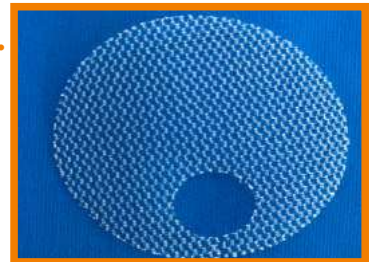
The abdominal wall is made up of several layers of connective tissue (similar to tendons and ligaments), muscle, fat and skin.

Usually, hernia starts out as a small tear in this connective tissue and expands.



This product is indicated for the repair of inguinal hernia defects.

Mesh plug designed for use in a tension-free preperitoneal open inguinal hernia repair technique.

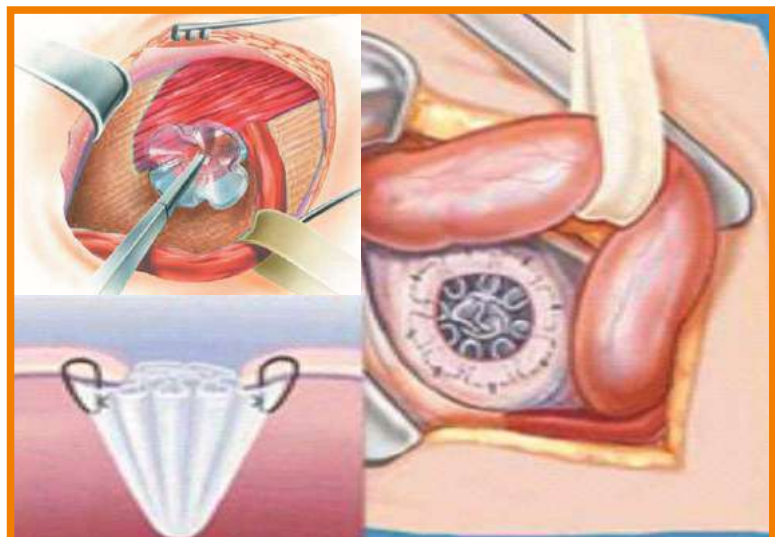


The outer of cone of the Supro Mesh Plug 3D, used as an underlay patch, is placed in the preperitoneal plane so that it lies flat against the posterior aspect of the transversalis fascia, assisted by intra-abdominal pressure.



The remaining of the onlay patch will help reinforce the internal ring.

If desired, the remaing can be brought together with sutures.



CODE	SIZE	DEMANTION
P3DS	S	Ø 3.4cm
P3DM	M	Ø 4.5cm
P3DL	L	Ø 5cm
P3DMM	M	40x35x75mm
P3DML	L	50x41x100mm
P3DMS	S	50x13x5mm



ANTIMICROBIAL INCISE DRAPE



A barrier to Bacterial Contamination

Transparent

Allows skin to breath

Impermable to water and bacteria

Hypoallergenic

Proper viscosity and high elasticity

HI-TEC[®]
Antimicrobial Incise Drape

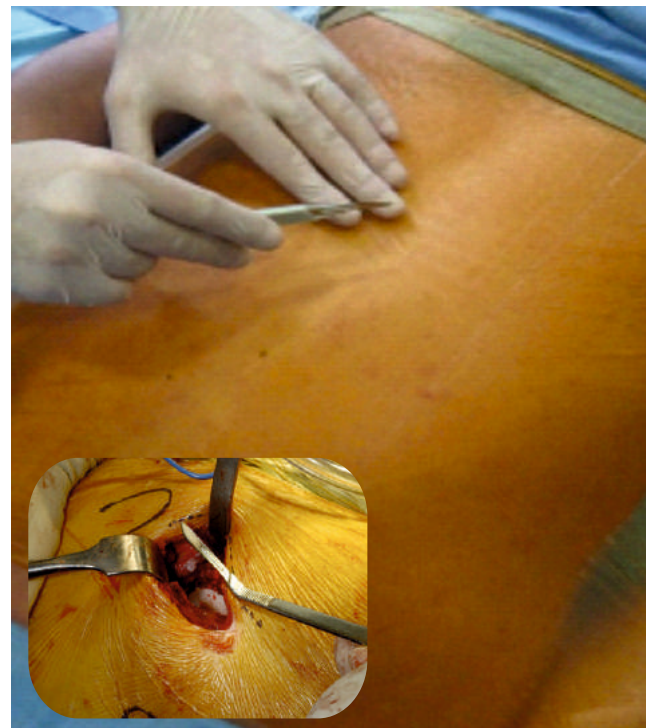
Antimicrobial Drape aims to use for preventing spreading of bacterias and post-op infections in surgical operations.

It is made of cuttable polyurethane and/or polyethylene film.

Results of the most clinical studies show that skin bacteria plays an important role in occuring post-operative infections.

It can be used all kind of surgical operations which has risk of post-op infections.

Cardiovascular procedures, valve replacements, knee and hip replacements in orthopedic surgery, shunt implantations are more prone to post-op infections due to skin bacteria in neurosurgery.





HI-TEC drape contains developed iodophor. Iodophor provides high and fast disinfection with application.

Especially it is important in implant surgeries.

Implants act as hideouts for bacterias and increase the risk.

Postoperative infections are major problem for surgeons. There are some major skin pathogens responsible for postoperative infections on the following:



**Staphylococcus aureus
Staphylococcus epidermidis
Escherichia coli
Escherichia enterococci**

CODE	SIZE
ID3030	30X30 cm
ID3535	35X35 cm
ID4545	45X45 cm
ID4560	45X60 cm
ID5645	56X45 cm
ID6040	60X40 cm
ID6045	60X45 cm
ID6060	60X60 cm
ID6090	60X90 cm
CUSTOMIZED SIZES ARE AVAILABLE	



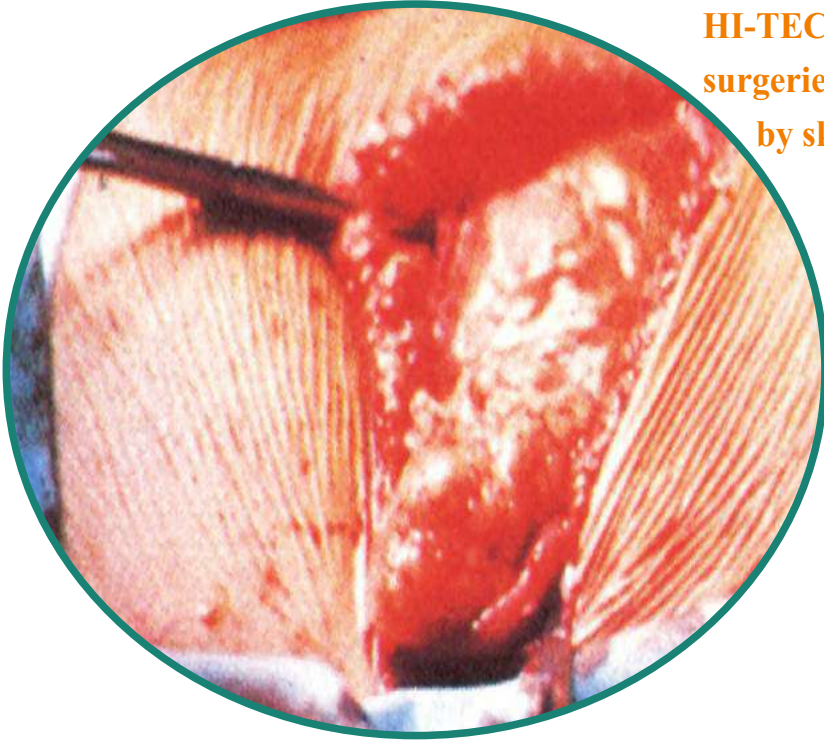
SURGICAL INCISE DRAPE



HI-TEC Surgical Incision Drape is used in surgical operations to prevent the spreading of skin bacteria and post-op operations.

After several clinical studies show that the skin bacterias have big role of post-op infections.

HI-TEC Surgical Drape is used in all type of surgeries that has post-op infection risk caused by skin bacterias.



It is made of cuttable polyurethane and/or polyethylene film.

Impermeable to bacteria and water

Hypoallergenic

Proper viscosity and high elasticity

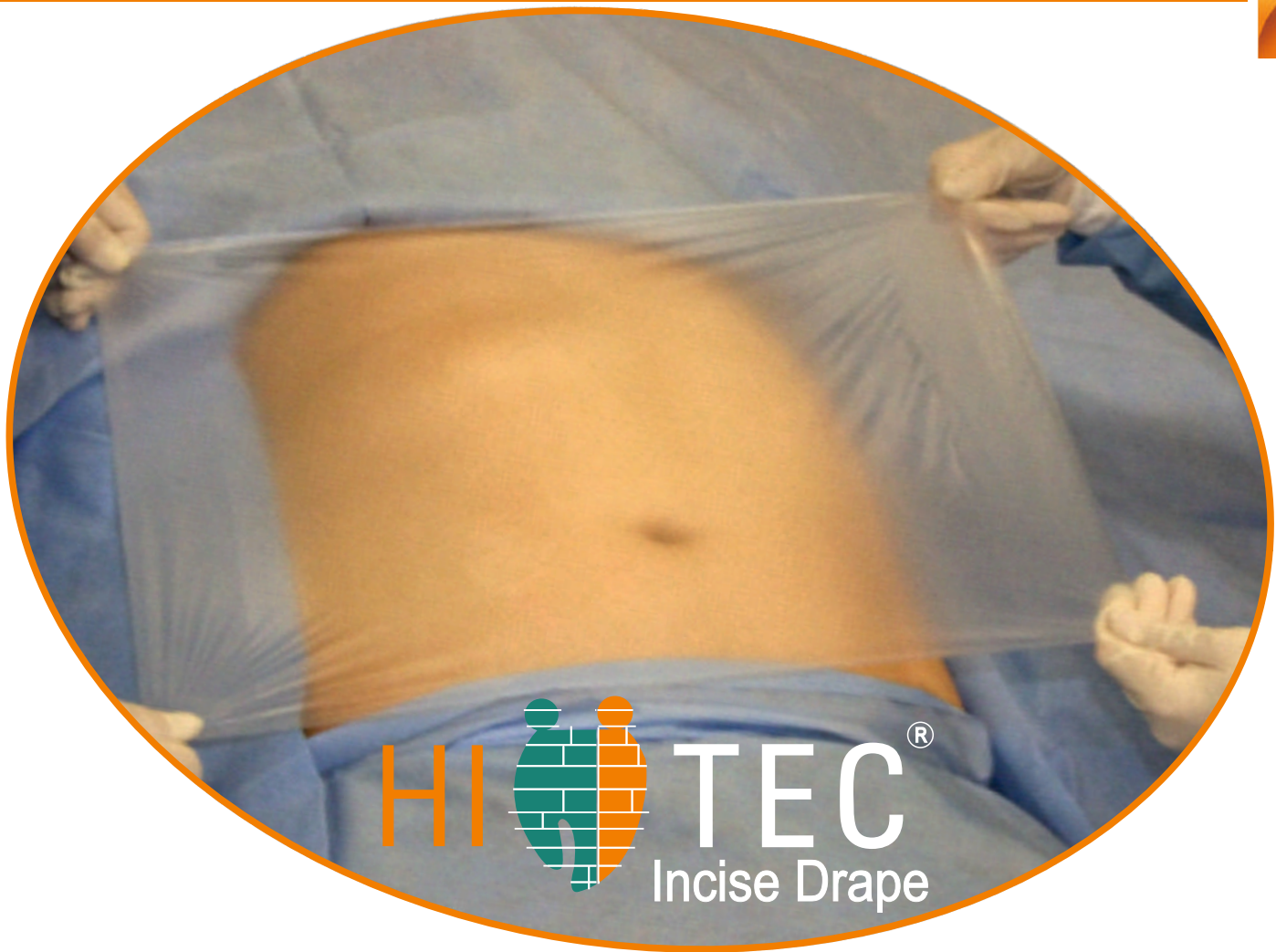
Bone, Abdomen operation, Chest and

Heart surgical operation, Plastic operation,

Ophthalmology and Pediatrics operations are some application areas.



Incise Drape



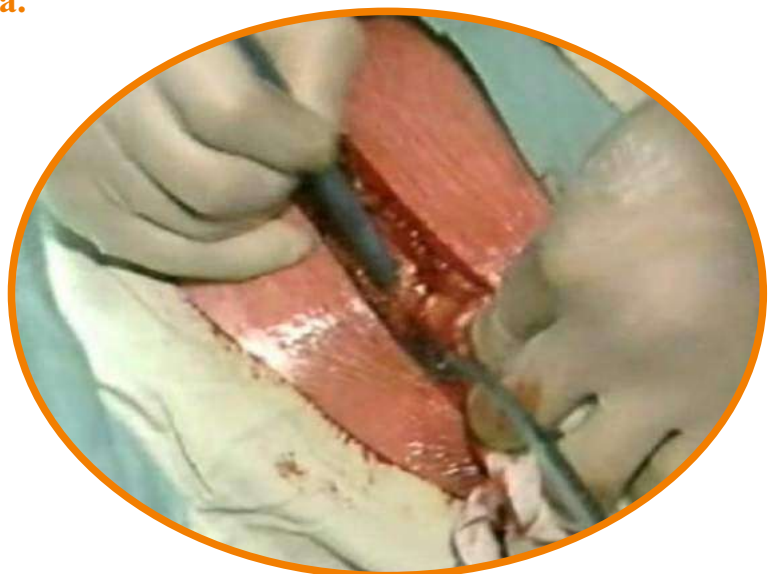
It has high quality transparent and ultra thin film with high elasticity.

Transparent structure permits skin to breathe and prevents gathering of excessive moisture under the film and decreases infection possibility and provides an acceptable environment around the cuttings.

Blood and similar liquids are suitable environments for bacteria.

HI - TEC Surgical Drape covers the operation site with its adhesive area and does not permit to effect operation area by bacteria, forms a barrier against bacteria and does not permit the transfer of bacteria.

CODE	SIZE
D3030	30X30 cm
D3535	35X35 cm
D4545	45X45 cm
D4560	45X60 cm
D5645	56X45 cm
D6040	60X40 cm
D6045	60X45 cm
D6060	60X60 cm
D6090	60X90 cm
CUSTOMIZED SIZES ARE AVAILABLE	





SUPRO[®]DURA

Dural Patch

Synthetic
Absorbable
Regeneration
Rapidly Repair
High Strength

Waterproof
Biocompatible
Soft & conformable
No swelling
Onlay procedure
Suture procedure
Sutured or Attached by itself



SUPRO[®]DURA is made of PLLA(Poly-L-Lactic Acid),
proven its biocompatibility and non-toxicity.

SYNTHETIC ABSORBABLE REGENERATIVE DURAL PATCH



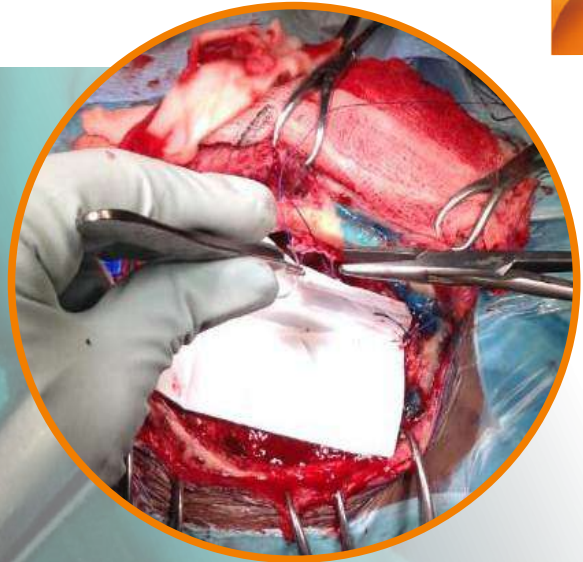
Supro[®]Dura is a synthetic absorbable dural patch that has regenerative feature.

It has a 3D microfibre structure which is similar to native ECM (extra cellular matrix).

It is soft, flexible and high-strength product that is appropriate for manipulation, handling and folding. It is completely absorbable within a year.

Special 3D microfibre structure of Supro[®]Dura offers faster and safer integration as well as tissue healing thanks to regeneration feature.

There is no structure deterioration after elasticity or forming.



SUPRO[®]DURA
Dural Patch





SUPRO[®]DURA
Dural Patch

Supro[®] Dura is a waterproof patch which makes it an excellent physical barrier for CSF leakage.

Ideal Dura Substitute

- Restoration of anatomy
- Physical Barrier
 - Separates intra- and extracranial components
 - Non-adherent to brain tissues
 - Excellent surgical handling
 - Can be sutured and sealed
 - Waterproof
- Timing of effectiveness
 - Immediate and long-term effectiveness
- Integration
 - Provides a platform for ingrowth of host dural cells
 - Integrates with the surrounding dura
- Safe and effective
 - Long-term absorbable
 - Non-toxic
 - Hypoallergenic
 - Not increase the infection risk
- Cost effective

It is used in CSF leakage thanks to %100 watertight feature.

In case of need it can be sutured or applied by hydrating.

Supro[®] Dura is good and safe for dural displacement

- Excellent surgical handling
- No toxicity reaction incidence reported
- Very low CSF leakage and infection incidence reported
- First consideration for use in case of revision surgery



- Well designed absorbable implant
- Good manipulation features
- Elasticity
- Produced with bio-nanotechnology that gives the non-woven fibre structure



Indications

Dural defect

- Lesions that involve, destroy or expand the dura

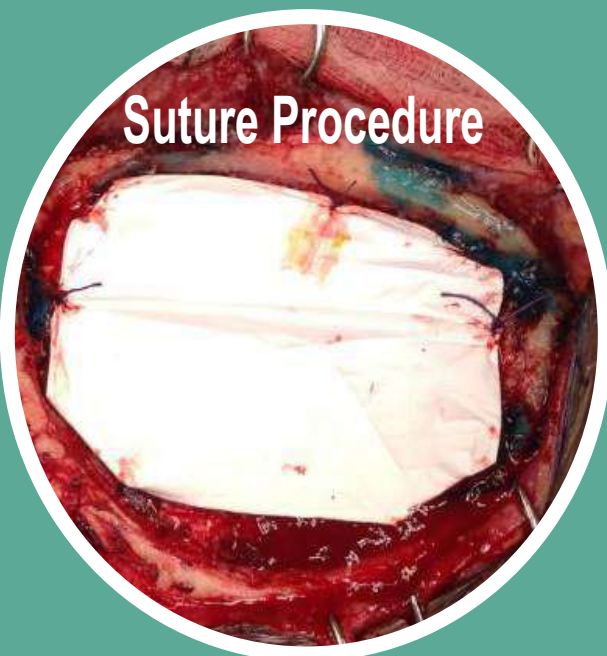
Procedure where dural augmentation is needed

- CSF pressure gradient
- Posterior fossa surgery
- Spinal intradural surgery
- Hydrocephalus

Procedure where watertight closure is needed

- Ventriculostomy
- Brachytherapy
- Implant Chemotherapy (eg. Gliadel)

Suture Procedure



Onlay Procedure



Hydrophobic

- Non-adherent
- Allows ingrowth of cells
- Can be resorbed and replaced



CODE

SIZE \pm 5mm

SD46

40x60mm

SD66

60x60mm

SD68

60x80mm

SD1015

100x150mm

SD1515

150x150mm

CUSTOMIZED SIZES ARE AVAILABLE





CUSTOM MADE PEEK REPAIR SYSTEM



Custom Made Repair System

Made of Polyether ether ketone (PEEK)

Non-absorbable & biocompatible

Medical implantable device



Cranio-Maxillofacial Custom Made PEEK Repair System

Excellent Customized Repair Solution

Excellent biocompatibility

Lightweight and stronger

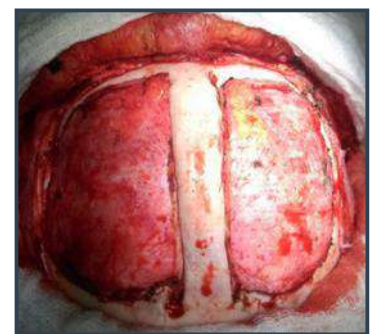
Similar elastic modulus with native bone

Compatibility with CT/MRI

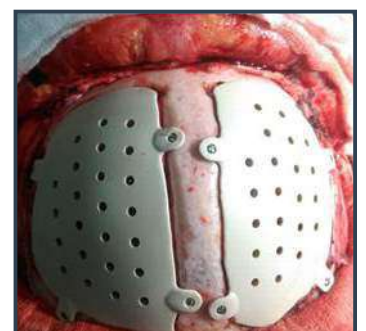
Low thermal conductivity

It offers one-to-one compatible real size and dimension implant

Cranial defect repair



Before



After

1-3 months fast and ergonomic solution



Precise 3D design
Customized 3D desing and
proessed accurately
Optional bridge design
Minimal artifacts and
surgery time



CUSTOMIZED *Cranio* PEEK

Low heat conductivity

Less discomfort due to temperature difference

High heat resistance up to 134° C without deformation

PEEK Heat conductivity 0.25-0.92

TITANIUM Heat conductivity 16.3-18

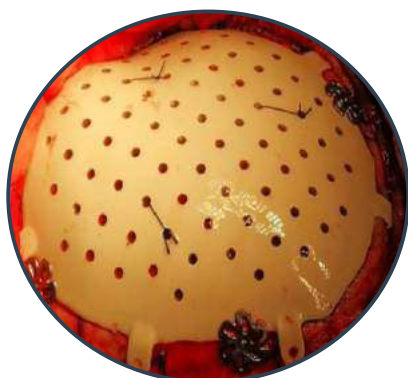


- Lightweight and stronger
- Less foreign body sensation, more comfortable experience
- Can withstand compression strength 530 PSI.
- Non-magnetic and highly translucent to X-ray.
- CT/MRI images without artifacts.

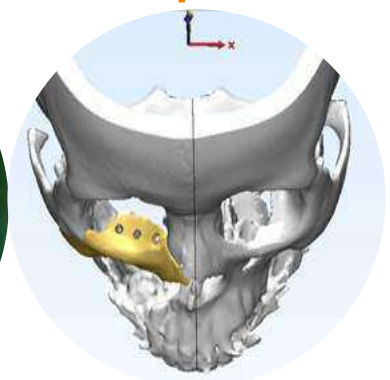
Do not cause damage to the bone because it has similar elasticity modulus

Frontal and Orbital defect repair
Temporomandibular joint and skull defect repair

Pediatric Cases



Maxillofacial repair



NEUROSURGICAL SPONGES



Surgical Sponge is specialized for neuro, orthopedic, spinal, vascular and microscopic surgeries.

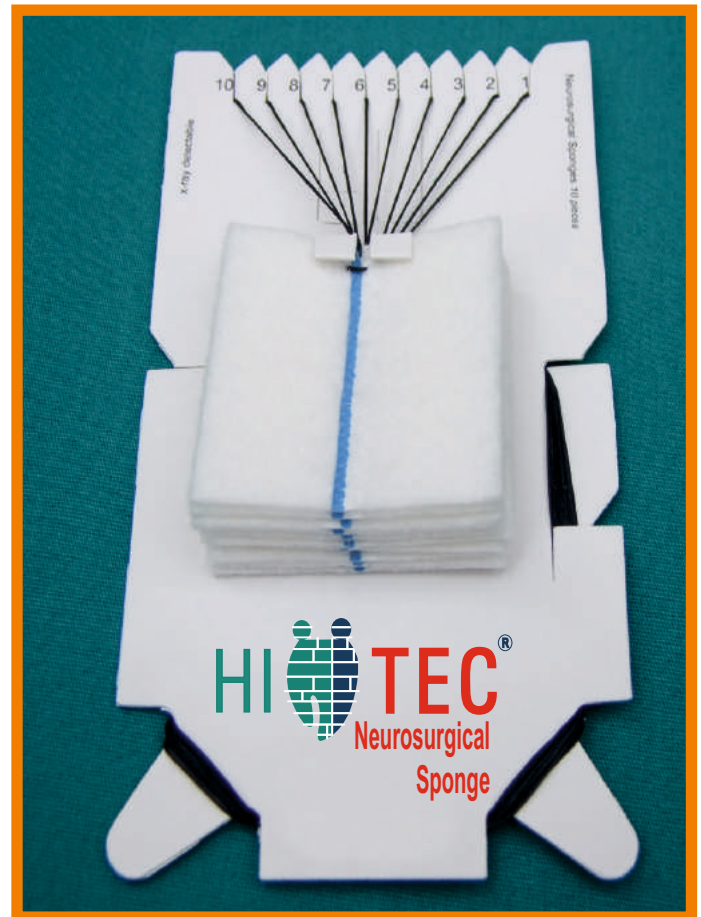
Made of high absorbent material, easily replace and remove.

Its elasticity provides ease of use.

Sponges and strips are X-Ray detectable.
Smooth surface conforms to tissue contours when moist.

HI-TEC Neurosurgical Sponge has absorbent property for its both side.

HI-TEC Neurosurgical Sponges are made of non - woven cotton providing a soft, strong, thin and high absorbent character in use.



HI-TEC Neurosurgical Sponges are made from a pliable natural hemostatic material with hypoallergenic and biocompatible properties.

Due to the high quality of material HI-TEC Neurosurgical Sponges provide effective bleeding control (Hemostasis).

Product becomes eligible for tissue around when its flat surface moistened.

Soft texture reduces possibility of tissue trauma.

Disposable material non - absorbable,
10 pads/strips in 1 sterile package,
20 sterile packages in 1 Box.



The cauterization is not possible in some surgical areas for control bleeding so the sponge is preferred to use for absorbing the bleeding in operations such as brain surgery, spinal surgery, orthopedics, vascular and microscopic surgeries.

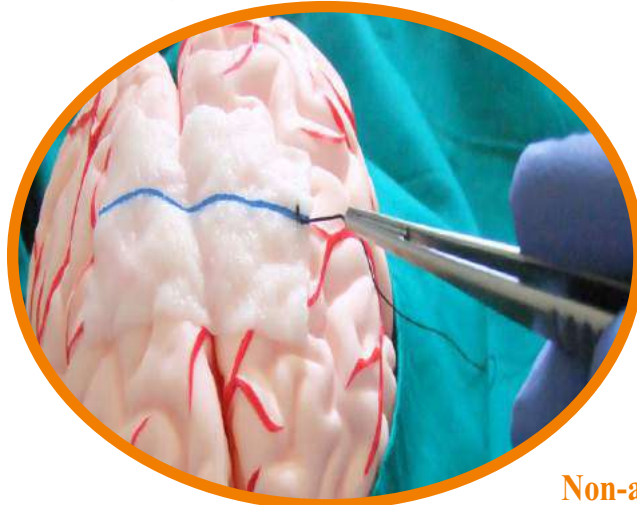
Sponge prevents spreading of the bleeding and its high suction feature provides compress to the bleeding.

There are two models of Neurosurgical Sponges

SUPRO brand:

Thick
No linting
No fibrous
Fledgeless

Absorbs the blood 20 times more than its weight.

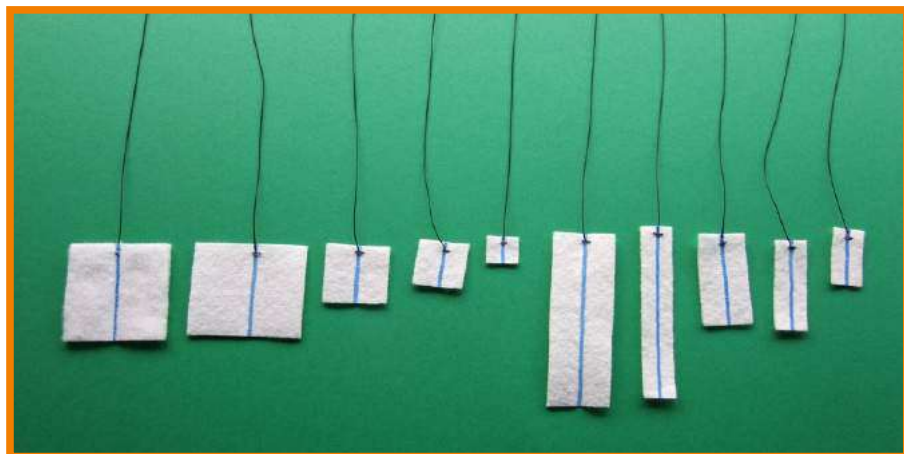


HI-TEC brand:

Thinner
Stronger
No loose fibres

Non-adherent neuro surgical sponge

Absorbs the blood 12 times more than its weight.



CODE	SIZE
HSSK1010	10X10 mm
HSSK1040	10X40 mm
HSSK125125	12,5X12,5 mm
HSSK12525	12,5X25 mm
HSSK12540	12,5X40 mm
HSSK12575	12,5X75 mm
HSSK2020	20X20 mm
HSSK2525	25X25 mm
HSSK2575	25X75 mm
HSSK4040	40X40 mm
CUSTOMIZED SIZES ARE AVAILABLE	



Antimicrobial
Incise Drape

HI TEC[®]

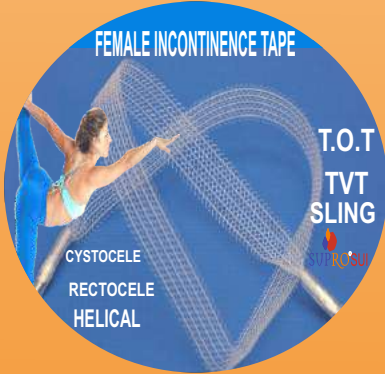
ANTIMICROBIAL INCISE DRAPE



Plug Mesh 3D
SUPRO[®] MESH
SURGICAL MESH

SUPRO[®] MESH

SURGICAL MESH



FEMALE INCONTINENCE TAPE
T.O.T
TVT
SLING
CYSTOCELE
RECTOCELE
HELICAL

SUPRO[®] SUI

INCONTINENCE TAPE



adhesion barrier
GEL
SUPRO[®] GEL

SUPRO[®] GEL

ADHESION BARRIER



HI  TEC[®]
NEUROSURGICAL
SPONGE

HI TEC[®]

NEUROSURGICAL PATTIES